



PRAIRIE SMOKE

Nachusa Grasslands Newsletter

Issue 35

August 1999

10th Annual Autumn on the Prairie

Saturday, September 18th, 1999 • 10 a.m. to 5 p.m.



Child and Turtle, Autumn on the Prairie

Our Autumn-on-the-Prairie celebration is an excellent chance to explore and learn about Nachusa Grasslands. There is no entrance or participation fee. The many and various **Guided Tours** are the backbone of the celebration, they begin every 15-20 minutes. Some tours will emphasize botany, geology, or edible and medicinal plants. While others remain general. Tours range from easy-to-moderate and short-to-long. A horse-drawn wagon, with a guide, will be available for several tours. And a self-guided botany tour, is an option for those who want to take their time enjoying particular species—descriptions of about forty species will be posted along the way.

The Temporal Anomalies—historical “re-enactors” will again present insights to the lives of early 19th century settlers in this area. Their presentation will include the observations of a Naturalist during the 1800's. In addition, they will have two “special” demonstrations, one at 12:00 noon and another at 1:45 pm.

At midday, Jim Kanas and Mike Crowe will provide alternating musical presentations of Bluegrass and traditional selections using a variety of instruments.

The **Children's Tent** will provide many hands-on activities—yes, touch, touch, touch! If butterflies are plentiful, kids and their parents, can go on an “expedition” to catch'm, identify'm, and release'm. There will be several seed collecting jaunts, for families, to collect

prairie plant seeds for future use on the preserve—Purple Prairie Clover, you'll love the smell of these! At 11:00 am and 3:00 pm a Storyteller will delight youngsters and oldsters. Kids little hands and faces are the right places to paint images of nature—fun and funny—who's next?

Three local artists will demonstrate-painting and provide some of their works for display and purchase. Dot Wade will again have, available for sale, an impressive variety of books on relevant “nature” topics. A selection of prairie plants will be made available for sale. Snow White Bakery & Deli will again sell taste-tempting food and drink. Thelma Dahlberg will present a view into the daily life of the American Indian by demonstrating corn-grinding, you can try it too. Flintknapping will be demonstrated by Pat Russ; and Tom Grimes will provide a display of American Indian artifacts. Chris Kodani, an

AOTP — Continued on Page 3

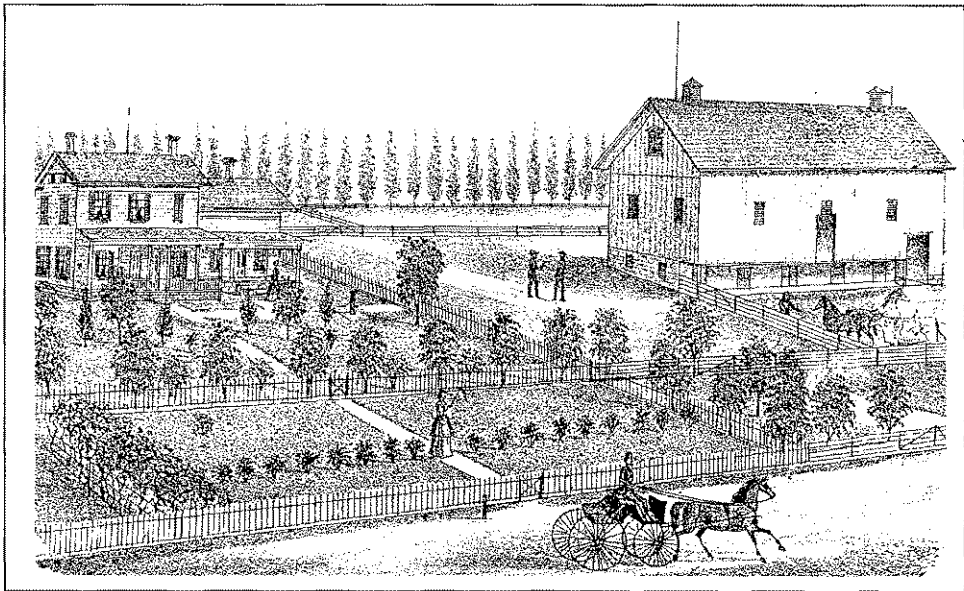
ITEMS NEEDED FOR THE RAFFLE AT AUTUMN ON THE PRAIRIE

Once again we are having a Raffle Tent at Autumn On The Prairie, September 18, 1999. Donated prize items are needed, books, artwork, woodwork, antiques, handmade furniture, bird feeders, jewelry, chocolates, gift certificates from local merchants or national catalogs,—just some ideas—let your imagination be your guide to choosing an appropriate prize. Think about it—what would you like to win?

Money from ticket sales is used to fund this celebration of the prairie so, it is important to sell lots of tickets! Offering a large selection of great prizes seems to be a successful strategy!

To donate, call Tonya Bittner at (815) 539-7014. If necessary arrangements for early pick-up and storage of donations can be made. Or you can bring your donations to Autumn On The Prairie before 10:30 am on Saturday. And, don't forget to stop by and purchase your tickets at the Raffle Tent!

UPDATE
ON THE BARN
HEADQUARTERS



Nachusa Grasslands is relocating an historic barn from near-by Ashton to the Preserve. The barn is an 1868 timber frame, bank barn. It's in beautiful shape. It will have a workshop for equipment repair, storage for equipment, vehicles and seeds, meeting room, resource room for field guides and herbarium, restrooms, breakroom, and the Preserve office. The drawing above is the barn as shown in the 1872 Lee County Atlas.

We are in search of volunteers. We need help preparing the barn for relocation to the Preserve. Also, to do much of the detail work after the professional timber framers get the barn up and roofed.

Get ready for an exciting and rewarding summer and fall by making your plans for participating in some of the following Barn Work Days:

- August 14 & 28
- September 25
- October 9 & 30
- November 13 & 27
- December 11

Most work days will be from 9:30-3:30 with a break for lunch (bring your own or you may choose to eat at the Lincoln Way Café in Franklin Grove).

This will be one of the most rewarding projects you have ever been involved with. The barn will ultimately be here to serve yours and Nachusa Grasslands needs well into the 21st century.

IT'S NOT TOO LATE !!!
TO GET YOUR NAME ON THE
BARN BUILDERS PLAQUE

Yes, I can help with the historic barn building project. Enclosed is my check for \$_____.

I understand that for a donation of \$50 or more I can have my name or designated name(s) on the plaque. The name(s) I want on the plaque is (up to 36 characters including spaces):

My name _____

Address _____

City _____ State _____ Zip _____

CLIP & MAIL!

DONATIONS TO THE
BARN FUND-RAISER

The following are additional donors to the Barn Fund-raiser:

- BOB & FUI LIAN INGER**
gave a large donation
- 5th Grade Etnyre School 1998-1999**
- Bill & Justine Kusner**
- Espie and Don Nelson**
- Craig J. Holderness**
- Bernie Robinson**
for Elizabeth Mathews Robinson
- First Presbyterian Church of Franklin Grove**
- First Congregational UCC of Lee Center**
- David J. Hougan**

THANK YOU!

← Mail to: Nachusa Grasslands, 2055 Lowden Rd., Franklin Grove, IL 61031 • **THANK YOU!**

NACHUSA GRASSLANDS LIMITED EDITION ART PRINT FOR SALE



Art Sinden painted the hills of Nachusa Grasslands in their autumn colors with a Northern Harrier and Oak saplings in the foreground. We had 400 prints made. They are signed by the artist and have the words 'Nachusa Grasslands 1999' in the border below the painting. The print is 27 1/4" x 15".

For \$25 you can have this beautiful print sent to you (unframed) in a special mailing tube (post paid).

For \$100 you can have it mounted with glass and framed in antique barn wood. You can pick it up at the preserve anytime or at the next Autumn On The Prairie (Sept. 18, 1999).

Call the preserve to order one: (815) 456-2340

The money from the print sale will go toward the building of our Stewardship/ Headquarters Barn.

Thanks to Jeff Meiners and Crest Foods, Inc. for commissioning the painting and covering half the cost of printing.

AOTP — Continued from Page 1

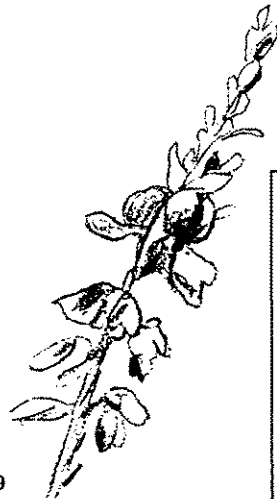
NIU grad-student, will include stuffed native mammals in his display. The primitive spear throwing tool, the atl-atl, a precursor of the bow-and-arrow, will be demonstrated by the Illinois Atl-Atl Association. Displays of informative materials and pictures regarding birds, butterflies, mammals, and the stewardship efforts of our volunteers and staff, will be located throughout the site. Now you have some highlights—come on over and enjoy much, much, more.

There will be a **Raffle Tent** and, of course, a raffle of many choice items, for example, the newly designed Nachusa Grasslands T-shirt, books, artwork, and prairie plants. Purchases of raffle tickets, and items from the **Welcome Tent**, help pay for this fun and educational celebration.

There is plenty of parking! A golf-cart-shuttle will be available, to bring folks up the hill to the Autumn On The Prairie celebration site. You may also hop on the shuttle at the end of your fun filled day.

ADOPT-A-PLANTING

Next summer we would like to have some new volunteers to adopt from 5 to 15 acres on the preserve for a two month period. Volunteers would need to come out about twice a week, as your schedule permits, for eight weeks. You will see many different plants and birds as you walk around your "adopted" acres. While walking you can clip or pull weeds, not hard work, enjoyable work within an area of reasonable size. A short-term commitment, long-term results. Don't miss the opportunity! Interested? Reserve early while choice acres are still available. Give us a call now!

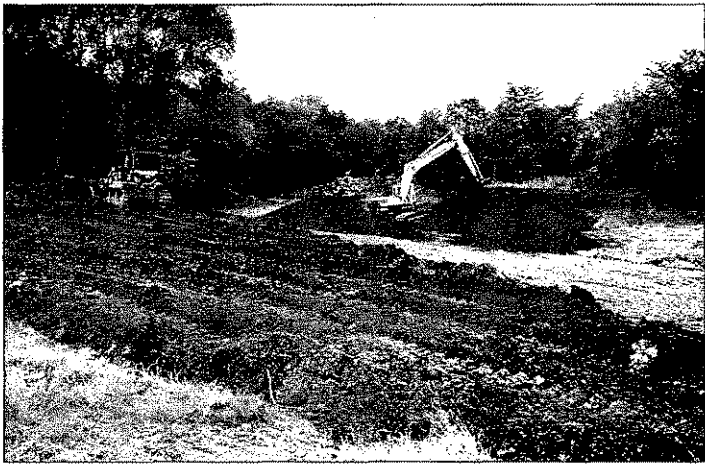


Tick Trefoil • by H. Reuter '99

Wish List

- Volunteers - weekdays or weekends (see calendar or call 815-456-2340)
- Research Projects (graduate research opportunities!)
- Audio/Viewer Projector (box with slide carousel on top that projects image from the inside onto the box's screen and has audio cassette capability)
- Donation for a walk-behind heavy duty mower (\$1900)
- Chest of drawers/Dressers for intern housing
- Clothes washer and dryer for intern housing
- Donate your old vehicle for trade-in (1990 or newer)
- Snowmobile (1990 or newer)
- Reference books for Stewards reference library
- An Office Volunteer - one morning or afternoon a week

Editor Susan Kleiman
 Associate Editor Thelma Dahlberg
 Associate Editor Dot Wade
 Associate Editor Bill Kleiman
 Associate Editor Gerald McDermott
 Manager of Mailing Ellen Baker
 Mailing List Manager Chris Pfoutz
 (Crest Foods, Inc.)



Re-sculpting quarries at Hook Larson Prairie

STEWARDSHIP HAPPENINGS

Reported by Bill Kleiman

We are nearing the end of another summer of weed management. We put in over 200 hours per week for eight weeks controlling the following weeds, Reed Canary Grass, Multiflora Rose, Sweet Clover, Mullein, Birdsfoot Trefoil, King Devil, Wild Parsnip, and Spotted Knapweed. Each spring and summer we have a sense of dread facing the prospects of attempting to control multiple weeds on our many acres. Plantings, once so thick with sweetclover other plants could not be seen, are now nearly weed-free. An area of the Main unit called "multiflora-rose-alley" can now be hiked in shorts. In one Unit, for example, spotted knapweed is down dramatically. Nonetheless, a number of plants continue to emerge from the seed bank. When this happens we pull, pile, dry, and burn them.

An enormous help this summer came from our seasonal crew Andy, Rob, and Trina. They have worked tirelessly in some hot-hot weather. Their efforts have kept our management goals moving smoothly.

Trina Zopp, currently from the Twin Cities area of Minnesota, grew up in Rockford. She graduated from the University of Minnesota. Trina worked in the Landscape Ecology Lab at the University and with the Minnesota Landscape Arboretum. She also participated in several research studies, applying science to restoration, as well as helping restore timber wolf populations while with the International Wolf Center in Ely, Minnesota.

Andy Clarke, also from Rockford, is attending the University of Illinois at Urbana-Campaign. Andy recently participated in the restoration plan for a wetland and surrounding forest. His portion of the project researched the past uses of the site through contacts with prior land owners. Andy, also good with computer systems, has helped keep us "connected" this summer.

Rob Wise, from Sterling, has been a volunteer at Nachusa for several years. Rob is attending the University of Wisconsin at Stevens Point. His interest range includes prairie restoration, study of the ways of Native Americans, and practice of the disciplines relative to Far-Eastern philosophies.

Roadsides can be a major "entrance" for weeds. Tom Mitchell, our Roadside Steward, with assistance from Jay Stacy, has been attempting to control various weeds on large sections of boundary roadsides. Still with a way to

go, progress is definitely being made.

Our success in weed management and stewardship in general is directly related to the efforts of many good folk. This summer we saw... Gene St. Louis, Sally and Max Baumgardner, Jay Stacy, Gene Miller, Ron Ingraham, John Schmadeke, Mike Adolph, Tom Mitchell, Bob Shone, Mary Blackmore, Terri Clarke, Kevin Kaltenbach, Mike Crowe, David Edelbach, Gerald McDermott, Ray Derksen, Sally Bowers, and Jerry Pauser ... a few good folk!

During our first year of ownership, a lot of stewardship has been accomplished on Hook Larson Prairie. Using a bulldozer and backhoe, two abandoned gravel mines had their steep sides reshaped to a more natural contour. In one mine the original topsoil was located and used to cover rocky sub soil. The restoration efforts turned out nicely and the areas have been seeded with a rich prairie mix. In carefully selected areas we used Roundup herbicide to brown-out large patches of dense weed sod. As a result, next Spring, we will be able plant these areas to prairie and oak savanna. No, we did not damage existing prairies.

This summer new plantings, and mowing them to keep the weeds down, required quite a bit of stewardship time. In early Spring we planted 120-acres, with native grass seed, for the neighboring Nichols family. We also planted



Bill Kleiman, Rob Wise, Jay Stacy, Trina Zopp, and Andy Clarke

15-acres with a rich prairie mix for another neighbor Nancy Hotchkiss. Nachusa Unit plantings included about 8-acres at Jay Meiners Unit, 3-acres around the new Schafer Unit potholes, and about 5-acres at Hook Larson Prairie.

Jan Granger has been monitoring butterflies using a permanent route we established over several years. Ann Haverstock continues with her impressive breeding bird study, now on its 8th season. We have at least four, hopefully more, pair of Henslow's sparrows breeding this year!

Many stewards have harvested and already planted some early species, for example, June Grass, Violet Wood Sorrel, Porcupine Grass, and Kitten Tails.

Jay Stacy has been, proudly, giving tours of his Naylor Road planting. Many dandy plants are emerging: Purple Prairie Clover, Stiff Aster, all the Silphiums, and Side Oats Grama—just to name a few!

New plants discovered on the preserve: Green Orchid (*Habernaria lacera*) and Prairie Willow (*Salix humilis*)—isn't this a great place?

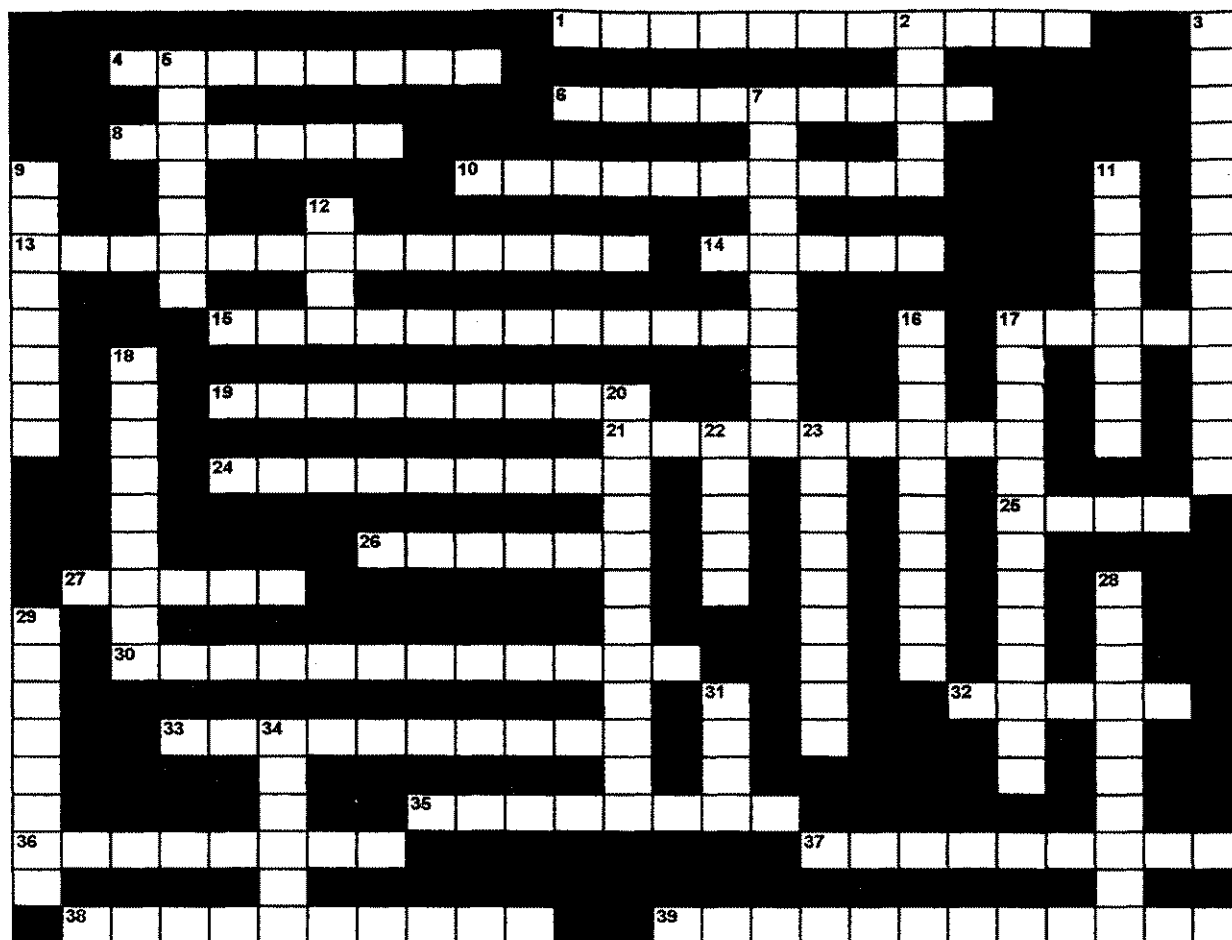
Cheers.

Prairie Challenge

This crossword puzzle was developed by Todd Bittner.
(Answers on Page 7)

SOME GENERAL CLUES

- All species, except one, are known from Nachusa Grasslands
- Sometimes the common names are used, sometimes the scientific names
- If the name is two words, don't use a space between them



CLUES ACROSS

- Grassland physician
- Amphibian species / Linen material
- Pioneer coffee substitute
- Prairie grove sentinel
- Leaf type with stem through it
- Flower which doesn't open for cross pollination
- Prairie shrub with aspirin form in root
- Directional composite
- Often painful to walk through
- Root popular herbal cure-all
- Original root for root beer
- Believed to indicate presence of precious ore
- Not a grass or sedge, but the other one
- Stems triangular
- Despite its name, not a grass but an iris
- Typically the last prairie plant on the list
- Native American ceremonial grass
- Turkey foot inflorescence
- Dicot with parallel-veined leaves
- Plant with velcro
- Arachnid plant
- Means stone seed

CLUES DOWN

- Fleshy fruit with a hard or stony center
- Holiday garland for pioneers
- Padded succulent
- Orchids with spiraling inflorescence
- Smallest flowering plant
- Shrub between eight and ten
- Root storage structure
- Red spring woodland fungi
- Sweet smelling sumac
- Balm for Rhus radicans
- Literally "star blue"
- Awns used by native Americans for hair brushes
- Leaf arrangement opposite of opposite
- Carex fruit
- Smells like buttered popcorn
- Apple fruit type
- Leaf margin without teeth



Sedge Wrens are numerous in the moist areas of Nachusa Grasslands.

NACHUSA GRASSLANDS STEWARDSHIP CALENDAR 1999

August

- 7 Sat: West Boundary Woods
- 14 Sat: Rolling Thunder Prairie Unit. AND Barn Workday 9:30-3:30.
- 21 Sat: West Heinkel Unit seed gathering
- 28 Sat: Dot & Doug Wade Unit. AND Barn Workday 9:30-3:30.
- 29 Sun: Schafer Unit

September

- 4 Sat: Roadsides and West Heinkel Unit seed collecting
- 10 Fri: Rock River Valley Conference, Byron Forest Preserve, \$10 by Sept. 1, Call John Church at Rockford Extension (815) 397-7714 for Registration Information.
- 11 Sat: **Preparation for Autumn On The Prairie and POTLUCK GATHERING** 9:30 AM - 4 PM
- 18 Sat: **AUTUMN ON THE PRAIRIE** - 10 AM TO 5 PM
- 25 Sat: Schafer Unit. AND Barn Workday 9:30-3:30.
- 26 Sun: Hook Larson Prairie Unit

October

- 2 Sat: East Heinkel Unit
- 9 Sat: Hook Larson Prairie Unit. AND Barn Workday 9:30-3:30.
- 16 Sat: West Heinkel Unit seed collecting
- 17 Sun: Main Unit
- 23 Sat: National "Make A Difference Day" - Rolling Thunder Unit (seed collecting) and Kittentail Unit
- 24 Sun: Schafer Unit
- 30 Sat: Dot & Doug Wade Unit. AND Barn Workday 9:30-3:30.

November

- 6 Sat: Roadsides and **PRESCRIBED FIRE WORKSHOP** (registration required). **NOTE: THIS IS A CHANGE FROM ORIGINAL DATE.**
- 7 Sun: West Boundary Woods
- 13 Sat: Schafer Unit AND Barn Workday 9:30-3:30.
- 14 Sun: Hook Larson Prairie Unit
- 20 Sat: **STONE SOUP SEED PROCESSING PARTY AND POTLUCK GATHERING** 9:30 AM - 4 PM
- 27 Sat: Dot & Doug Wade Unit. AND Barn Workday 9:30-3:30.

December

- 4 Sat: Main Unit
- 11 Sat: Dot & Doug Wade Unit. AND Barn Workday 9:30-3:30.
- 12 Sun: Schafer Unit
- 18 Sat: Hook Larson Prairie Unit

January 2000 !!

- 8 Sat: Dot & Doug Wade Unit
- 15 Sat: East Heinkel Unit and **POTLUCK GATHERING**
- 22 Sat: Hook Larson Prairie
- 29 Sat: Schafer Unit

STEWARDSHIP WORKDAYS mainly involve brush clearing, weed removal, and seed collecting and planting. Often there is a hike afterwards. All workdays and events start at 9:30 and end about 1:30 unless otherwise noted. Bring a lunch or snack. Meet at the Stewards' Barn at 2055 Lowden Rd. Extreme weather conditions will sometimes cause a steward to cancel a workday.

BARN WORKDAYS last from 9:30-3:30 with a break for lunch.

POTLUCK GATHERINGS start at 9:30 with stewardship or learning and then food is shared at noon.

We have on-going stewardship crews **DURING THE WEEK** throughout the year (usually Mondays, Wednesdays and Fridays). Also every weekday in the **SUMMER**. These all start at 8 am.

To arrange to start volunteering with us just show up on these dates and/or call Bill or Susan Kleiman at the preserve office at **(815) 456-2340**.



Neighbor, John Bivens, in front of wetland and pond he created on his & Nachusa property. Schafer Knob in background.

NACHUSA GRASSLANDS UNIT STEWARDS

STEWARDS

Clear Creek Unit

Prairie Preservation Society
of Ogle County

Dot & Doug Unit

Gene St. Louis

East Heinkel Unit

Mike Crowe

Fen Unit

Kevin Kaltenbach

Hook Larson Prairie Unit

Dave Breen

Jay Meiners Wetland Unit

Jeff Meiners

Kittentail Unit

West Chicago

Prairie Stewards

Main Unit

Mike Adolph

Roadside Stewards

Tom Mitchell

Rolling Thunder Unit

Sally Baumgardner

Schafer Unit

David Edelbach

West Heinkel Unit

Jay Stacy

West Boundary Steward

Bill McCarthy

Science Stewards:

Bird Monitoring

Butterfly Monitoring

Herbarium Steward

Outreach Volunteers:

Publicist/Educator

Autumn On The Prairie Chair

Youth Stewards Leaders

CO-STEWARDS

Mary Blackmore
Terri Clarke

Barb Regan

Todd Bittner

Jay Friberg

Steve Meiners

Mel Hoff

Bob Shone

Jenny Mitchell

Max Baumgardner

Gerald McDermott

Gene Miller

Ron Ingraham

John Schmadeke

Ann Haverstock

Jan Granger

Dwight Heckert

Sally Baumgardner

Mike Adolph

Howard Fox

Hazel Reuter

Ron Ingraham

Mike Adolph

Sally Baumgardner

NACHUSA GRASSLANDS SUPPORT "THANK YOU" TO:

The 1999 Summer Crew: Trina Zopp, Rob Wise and Andy Clarke - for working hard, happy, and with high skill.

Max Baumgardner - for being our "general contractor" for the Stewardship Headquarters Barn, for donating wood from one of his old barns, and for making the barn-wood frames for the Art Print we are selling as a barn fund-raiser.

Hazel Reuter - for slides to copy, drawings of native plants, and back issues of "Prairie Smoke" for our archives.

Dean Weidman - for seeds of Ironweed.

Carol Boynton - for the Birder's Handbook for our library.

Gene St. Louis - for leading a tour for The Wild Ones, donating a new propane BBQ grill, tools, hose, designing and assembling the faucet controls at the barn, and purchasing herbicide for his unit.

Mike Adolph - for Kiosk displays and Chairing the Autumn On The Prairie celebration.

Tom Mitchell - for updating the chalkboard list of blooming plants at the Kiosk.

Dwight Heckert - for setting up the self-guided plant identification tour at the Main Entrance and for his terrific start on the Herbarium.

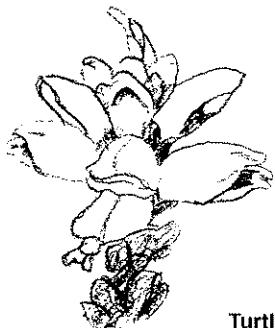
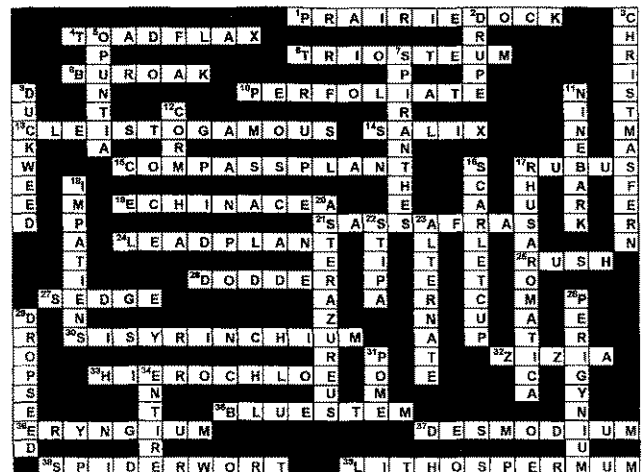
Gerald McDermott - for a great beginning on the Photo-Point Monitoring.

Ann Haverstock - for her annual bird monitoring.

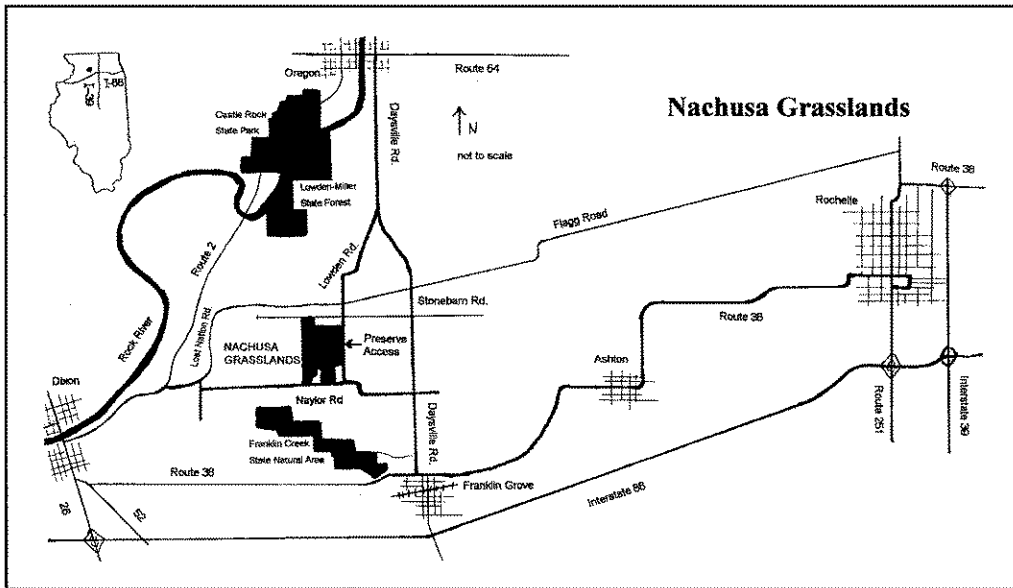
Jan Granger - for becoming our butterfly monitor.

Thanks to all who contributed to this newsletter, and to everyone who participates in the stewardship and support of Nachusa Grasslands.

Answers to Prairie Challenge (Page 5):



Turtlehead • by H. Reuter '99



From Route 64: At eastern edge of the city of Oregon, turn south on Daysville Rd. (towards Lowden-Miller State Forest). Travel approx. 2.4 miles to Lowden Rd., turn right (angle) still following State Forest sign. Travel south approx. 5.3 miles (past State Forest) to a 4-way stop at Flagg Rd. Continue south another 2 miles, the preserve entrance is on the right (west).

From Dixon: Option 1: Take Rt. 38 East into Franklin Grove then turn left (north) on Daysville Rd. Travel 1.5 miles north to Naylor Rd., turn left (west) and go 2.2 miles to Lowden Rd., turn right (north) and go 1 mile to preserve entrance on the left (west).

REACHING NACHUSA GRASSLANDS

From I-88 (East-West Tollway): Exit at Rt. 251 North (Rochelle), to Rt. 38 West. Travel through Ashton and into Franklin Grove (approx. 16 miles), turn right (north) on Daysville Rd. Travel 1.5 miles north to Naylor Rd., turn left (west) and go 2.2 miles to Lowden Rd., turn right (north) and go 1 mile to preserve entrance on the left (west).

Option 2: Take Rt. 2 North (approx. 2.3 miles from Rt. 26/Galena Ave.), turn right (east) on Lost Nation Rd. Go one mile to Maples Rd., turn right, then left immediately onto Naylor Rd.. Go east for 3.5 miles to Lowden Rd. Turn left (north) and go one mile to preserve entrance on left (west).

The Nature Conservancy

Nachusa Grasslands
2055 Lowden Road
Franklin Grove, IL 61031
(815) 456-2340



To Our Friend Below or the Current Resident:



Nachusa Grasslands is owned and operated by The Nature Conservancy, a private non-profit group whose mission is to protect plants and animals by protecting the land and water they need to survive.