



PRAIRIE SMOKE

Nachusa Grasslands Newsletter

Issue 31

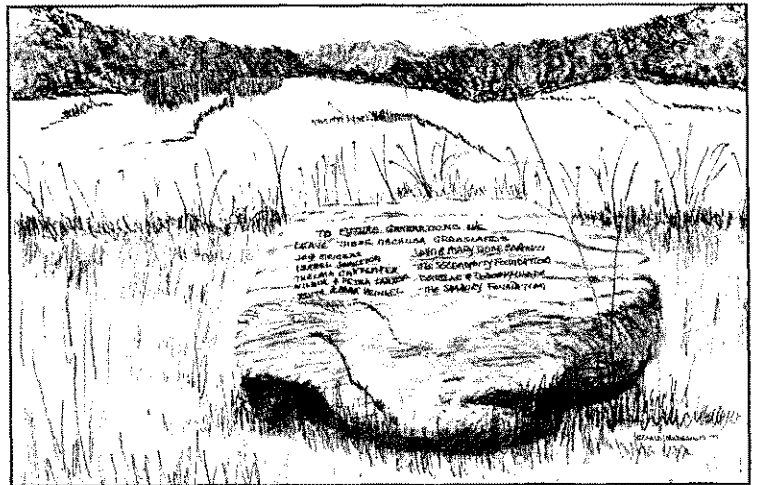
March 1998

Recognition Rock Dedication Ceremony at Nachusa Grasslands

I wish I were a little rock,
 A-sitting on a hill,
 A-doing nothing, all day long,
 But just a sitting still;
 I wouldn't eat, I wouldn't sleep,
 I wouldn't even marry --
 I'd sit and sit a thousand years,
 And peacefully watch the prairie!

The Weary Wisher
 Frederick Palmer Latimer (1875-1940)

Adapted by Gerald McDermott



Drawing by Gerald McDermott

This year at Autumn-on-the-Prairie, we unveiled our donor recognition boulder. On the surface of the boulder is etched a heading and the names of our current "big 10" donors. In a brief ceremony Bill Kleiman read a poem (copied above) and some thoughts from the late conservationist Aldo Leopold. Mrs. Dolores Meiners spoke, with her grandson Brandon at her side (right), of her late husband's love of nature. Dorothy Wade spoke of her husband Doug, Thelma Carpenter and Isabel Johnston.

The boulder is located near the entrance on top of a prairie knob and reads:

| | |
|---|----------------------------|
| To future generations we leave these Nachusa Grasslands | |
| Jay Meiners | John & Mary Rose Santucci |
| Isabel Johnston | The Serendipity Foundation |
| Thelma Carpenter | Douglas & Dorothy Wade |
| Wilbur & Petra Larson | The Seabury Foundation |
| Edith & Anna Heinkel | |

In future years more names will be added to our boulder.

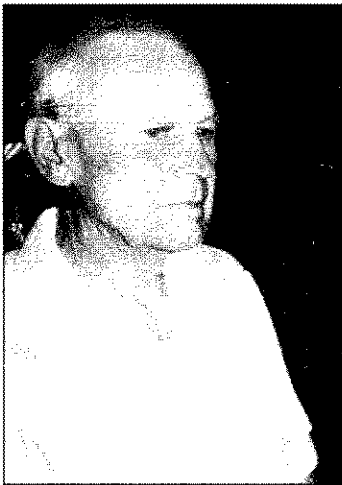


Mrs. Dolores Meiners with her grandson Brandon Meiners at the dedication ceremony of Nachusa's donor recognition boulder.



Harold Walkup: Friend of Conservation

by Bill Kleiman



Harold Walkup in 1987

Mr. Harold Walkup, a quiet-spoken 97 year resident of Ogle County, recently made a large donation to Nachusa Grasslands and the Illinois Chapter of The Nature Conservancy.

Mr. Walkup was born on a farm in Pine Creek Township at the turn of the century. He walked a mile to the local one-room schoolhouse and learned to hunt when he was quite young. After attending Oregon High School, he attended Northwestern University. World War I was starting and he decided to enlist in the Army. He attended the University at night and boot camp during the day.

In 1920, Mr. Walkup came home from the army and took an apprenticeship with the Kable Printing Company in Mt. Morris, where he became an electrotyper. World War II found Harold enlisted and patrolling the boundary between the United States and Mexico. After the war he again returned to work at Kable Printing and retired after nearly five decades.



Harold Walkup at the stern on the Brule River.

Mr. Walkup built his own home. His friend of 80 years, Clarence Mitchell, wrote of Harold, "... he laid up a stone fireplace that was based on a deep concrete footing. The structure consisted of one large room in which he finished the interior with smooth finishing cedar." Harold cut firewood for his stoves from his own timber stand. Clarence remembers, "Many winter Sundays were spent watching birds at Harold's bird feeders while we sat inside the warm kitchen and drank hot tea and ate cakes."



Harold Walkup(right) and Harold McNett with a harvest of mallards in 1962.

In making a donation to support our conservation work, Harold Walkup confirms the importance of keeping the natural world part of our lives and those that follow.

A long time friend to conservation of habitat and cultural treasures has died at age 94.

Winifred Knox of Franklin Grove started the park to our south, Franklin Creek Natural Area, with a large donation of land.

Mrs. Knox had many friends and was well liked in the community. She will be missed.

Nachusa Grasslands Support

- **John Deere Foundation** - Thanks to the foundation for their generous gift of \$10,000 to support stewardship of Nachusa in 1998.
- **First Presbyterian Church of Franklin Grove**
- **Charles L. Earl**
- **In Memory of Harold and Dorothy Ross: Bill Ross**
- **Enders Greenhouse**
- **Warren and Harriet Ann Badger**
- **James Grove**

Other support thanks:

- **Dot Wade** - field guides for Youth Steward program
- **Howard Fox** - building the visitor entrance kiosk, with assistance from **Gene Miller**.
- **Dave Derwent** - donated seeds
- **Dean Weidman** - donated seeds
- **Frank & Jeri Ptacek** - donation for seed purchase
- **Nancy Winter** - large donation for seed purchase
- **Gene St. Louis** - numerous photographs and slides of the preserve.

Editor-Publisher Laura Busch
 Associate Editor Dot Wade
 Associate Editor Bill Kleiman
 Associate Editor Thelma Dahlberg
 Manager of Mailing Ellen Baker

A Word of Thanks

By Mike Adolph



Mike Adolph, co-chair of AOTP, made a new display on savannas and put together the popular self-guided plant identification tour.

A project the size of Autumn-on-the-Prairie requires the time and effort of many people. In this therefore lengthy thank-you, some people's names will appear more than once. Apologies to anyone who's not mentioned where they should have been.

The event was co-chaired by Gerald McDermott, Gene St. Louis, and Mike Adolph with much assistance by

Tonya Bittner. Site preparation was accomplished by Jason Johnson, Bill Kleiman, Jay Stacy, Ron Ingram, Gerald McDermott, Jenna Sanders, and JoAnn Keyes.

Fine entertainment was provided by Mike Crowe at the piano and concertina, with L.D. Lund on sax and piano, Larry Crowe on the banjo, and Phil Strang playing spoons.

Tours have been an all-important feature of the festival. Those who presented our site this year to the public were: Mike Crowe, Sally Baumgardner, Eric Thomas, David Edelbach, Jason Johnson, Kevin Kaltenbach, Jenna Sanders, Jay Stacy, Gary Tollaksen, Bob Shone, Earl Thomas, Mary Blackmore, Dave Breen, Mike Adolph, Dennis Lubbs, Paul Sorensen, Boh Dziadyk, and Todd Bittner.

Our vendors and suppliers are essential, and we appreciate their years of very good service. They are: Snow White Bakery & Deli, Big John Portable Toilets, Rock River Rent-a-Tent, Enders Nursery, and especially the Gene Rod Family of Rod's Golf Carts in Mendota for donating their carts to assist visitors to and from the parking lot. Dot Wade's Windrift Book Store (assisted by Ellen and Larry Sheaffer), donated all profits to the event.

Ed Collins, Dean Maki, and Joe Ware make up the group called "Temporal Anomalies", which enacts



Edward Carrington, an early 1800's naturalist/teacher as interpreted by Ed Collins.

life in Illinois circa 1800. This was a big feature of our event.

Those providing displays were Bob Parenteau, Anne Meyer of Enders Nursery, Roger Gustafson, Mike Adolph, and Gene St. Louis. Gene's fine photo displays of the various management units filled a whole tent.

Setting up on Friday afternoon and Saturday morning is a hectic job. Bill Kleiman, Jay Stacy, Ron Ingram, Gerald McDermott, Gene St. Louis, Mike Adolph, and Ray Derksen helped complete this task.

Tonya Bittner undertook the big task of securing raffle prizes and managing the raffle tent. Those who donated prizes were: Max & Sally Baumgardner, Chris Bronny, Illinois DNR-Heritage, Enders Nursery, Howard Fox, Genesis Nursery, Aggie Kleiman, Susan Kleiman, Margaret Knight, Bill Mayes, Gerald McDermott, Gene Miller, Gene St. Louis, Dot Wade, Lee County NAGS, and the Illinois TNC Field Office. Those who helped Tonya with the raffle were: Beth Wiltshire, Todd Bittner, and Emily Oros.

Susan Kleiman once again provided many activities for children, assisted by Thelma Dahlberg, Sally Baumgardner, Kelly Webster, and Brandon Meiners.

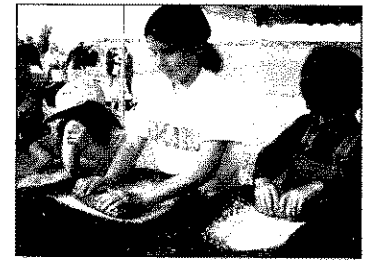
The volunteer exhibit was set up by Gene St. Louis and was handled by Bob Parenteau, Bob Shone, Sally Baumgardner, Ron Ingram, Jim Long, Hazel Reuter, Earl Thomas, and Laura Busch.

The Welcome and Sales tent was staffed by Hazel Reuter, David Edelbach, Beth Wiltshire, Dave Breen, Laura Busch, Todd Bittner, Jim and Lela Long, Ellen Baker, Jason Johnson, Ron Ingram, Sally Baumgardner, and Carol Kelley.

Publicity was in the hands of Greg Wermers, Gene St. Louis, and Sally Baumgardner.

Cleanup and dismantling of the site was accomplished under Bill Kleiman's leadership, assisted by Jay Stacy, Susan Kleiman, Bob Shone, Ray Derksen, David Edelbach, Gerald McDermott, Gene St. Louis, and Mike Adolph.

A round of applause and heartfelt thanks to all those mentioned above, and any who may have been unwittingly omitted, for doing their part to help make 1997's Autumn-On-The-Prairie another great success!



Grinding corn was one of the many activities occurring in the children's tent.

From the Preserve Manager

by Bill Kleiman

This Fall, Nachusa had a volunteer from Pennsylvania, Jeff Reidenbaugh, for eight weeks of full time service. Jeff is considering attending graduate school and wanted to try out some conservation work. Jeff was kept very busy doing lots of tasks like harvesting seeds by hand and running our new motorized seed harvester. He helped with our one prescribed burn we were able to do during our last Fall which was cold and wet. Jeff helped us with boundary clearing, he completed a large and colorful soils map, and a spreadsheet filled with preserve data. At our going away dinner for Jeff, Jay Stacy summed him up well, "What a great guy. He was a very nice, polite young man who worked hard".

Gene St. Louis and Susan Kleiman recently increased their fire training by taking the six day federal fire behavior courses called S290/390. This spring they will attend the national TNC week-long fire school taking place at Nachusa. Gene took a week of his vacation and paid his own tuition and expenses. Thanks Gene.

After being recognized for his stewardship by the Volunteer Stewardship Network this Fall, Mike Adolph was recently given an honorable mention by John Sawhill, president of TNC for his long-term efforts at Nachusa Grasslands.

A large harvest was again brought in this year by the many seed savvy Stewards and volunteers. At our annual seed processing party, twenty two of us spent the morning freeing the seeds from their capsules and dividing the species into various mixes. Present were David E., Jay, Jeff, Gerald, Rob, Susan, Gene St., Bob, George, Tonya, Todd, Sally, Ray, Dean, Zinc, Martha, Jenna, Mike C., Jason, Agnes, and Ellen. It was a lot of fun and the amount and quality of seed was impressive. Already a good amount of the seed has been planted to allow the wet and cold months of winter to break the dormancy of the seeds and allow them to germinate when the soils warm this Spring.

At summer's end, about a quarter mile of field drainage pipe was dug up in the field west of Schafer Knob. The following helped keep the backhoe and skid loader going full time: Jim Long, David Edelbach, Gerald McDermott, Jay Stacy, Jason Johnson, Jenna Sanders, Ron Ingraham, Susan K. and myself. The area at the bottom of this field is already full of puddles.

This Fall, Nachusa co-sponsored a two day burn workshop in McHenry County that was attended by the following Nachusa volunteers: David Edelbach, David Breen, Gerald McDermott, Ron Ingraham, and Bob Shone. Various topics were covered which included crew safety, fire planning, weather, and fire behavior.

We have been working on clearing brush from some

boundaries to allow for easier fire management and fence maintenance.

Special thanks to Joann Keyes who completed a cooperative education class with us from NIU.

Howard Fox built the new information kiosk at our entrance. The kiosk is handsome and fits the site well. Howard was assisted by Gene Miller. The bulletin boards on the kiosk are being maintained by Mike Adolph. Mike intends on having photos of various species that are currently blooming, breeding, or passing through.

Jay Stacy and company (Ron Ingraham, Gene Miller, Jeff Reidenbaugh, Fui Lian and Bob Inger and others) have been a whirl wind of energy on the West Heinkel Unit. They have been clearing out the weed shrubs of multiflora rose, honeysuckle, and buckthorn from large areas and seeding a rich mixture of savanna seed into the bare soil. Our plant sampling work suggests this specific area was likely an oak savanna community that was nearly obliterated from years of dense shade from the "weedy" trees and shrubs that came up quickly upon cessation of fire after European settlement. Jay is out here working several days a week and has this Unit moving in a healthy direction.

The Schafer Unit Stewards, David Edelbach and Gerald McDermott have been busy also. They have torn up drainage tiles, done intensive weed management, harvested lots of conservative seed, cleared honeysuckle and multiflora rose, and they serve cookies at their workday.

Sally Baumgardner and friends have been doing great seed harvesting this Fall. Sally also continues her monthly natural history columns that she submits to local newspapers. Nachusa is often highlighted in these. Recently, a group of 10-year-old children from the north side of Chicago saw their first milkweed with Sally. One student said he had seen them before and they were what gave the deer their milk.

Gene St. Louis had good workdays this Fall harvesting seed. Gene was also spotted on several evenings rapidly harvesting seeds in all sorts of habitats. As usual, he filled up three or four barrels with seed for his unit.

This issue of Prairie Smoke has an enclosed flier announcing our new barn to be built this Summer. We are going to build a handsome barn using timbers and siding from an 1800's barn. The two story structure will have a shop space and equipment storage on the first floor and office and meeting space in the loft. We have about half of the funds raised from a donation from John Santucci and part of the recent Harold Walkup donation. I hope you will consider a donation to this barn building project.

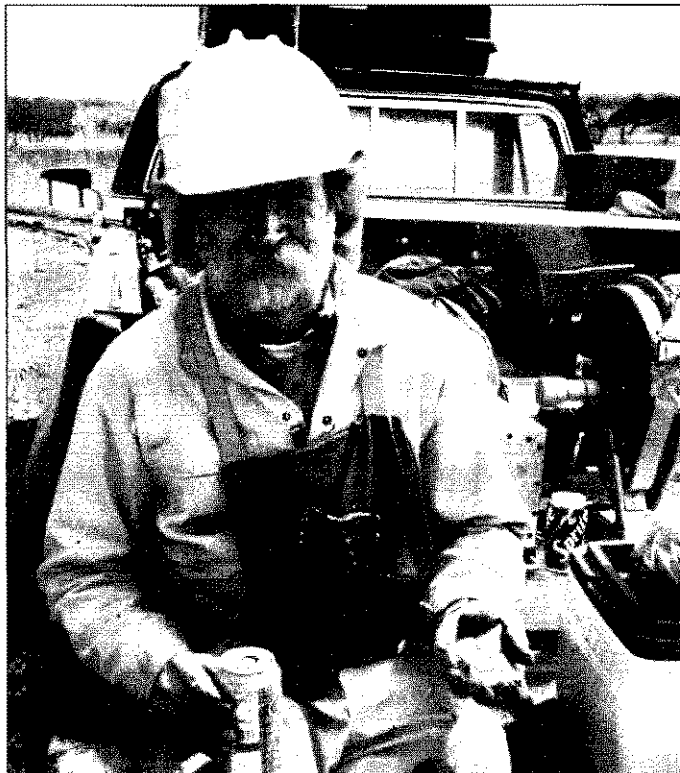
Nachusa Scrapbook



Sweethearts of the Prairie. Dennis Lubbs and Kathy Motto were married August 9, 1997



Jason Johnson testing a new tool that drips herbicide into a sponge for controlling Canada thistle.



Gene St. Louis, re-hydrating after burning off a section of prairie remnant. He's wearing the latest fashion of yellow fire retardant clothing and helmet.

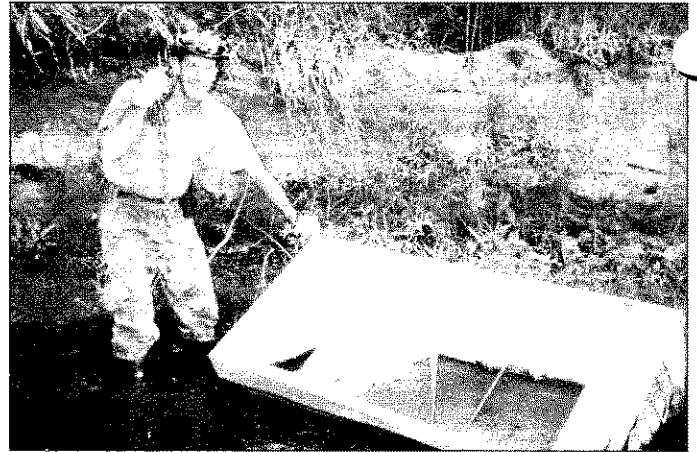


Bob Parenteau was the Master Soup Chef at November's Stone Soup party.

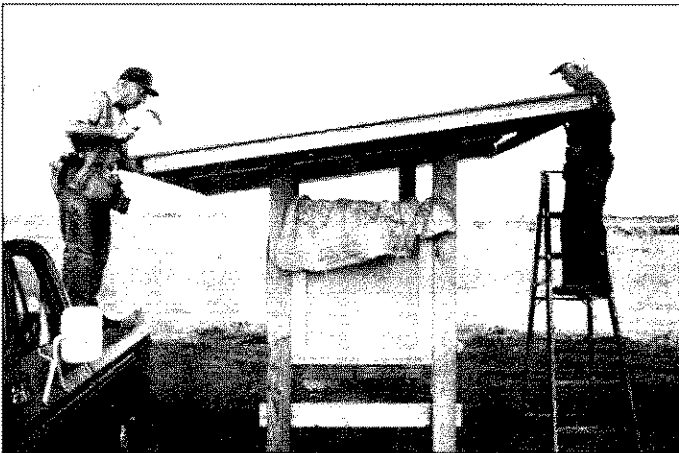
Nachusa Scrapbook



Birders, including our researchers Ann Haverstock, Jim Herkert, and Scott Robinson, observe the rare Henslow's sparrows calling last spring.



Jason Johnson removing a dumped refrigerator from Franklin Creek. A few weeks later a couch was also dumped there at the Naylor Road bridge and retrieved by Bill Kleiman.



The new kiosk having its roof installed by Howard Fox (right) and his assistant, Gene Miller.



The Nachusa and West Chicago Prairie crew that cleared out the area between the Fen & Kittentail Units last October.



Todd Bittner (table far left), Sally Baumgardner (behind bag - sorry Sally!), and Jay Stacy (holding bag), helped to determine seed mixtures at last November's Stone Soup gathering.



Jay Stacy, Steward, in the newly planted West Heinkel Unit field by Naylor Road. Five silt fences were installed to help restore an eroded drainage way in the field. Numerous species were planted after the field was lightly disced, dragged, and rolled.

NACHUSA GRASSLANDS STEWARDSHIP CALENDAR FOR 1998

March

- 21 Sat: Fen Unit with Kevin Kaltenbach and AOTP meeting at 9:30
- 22 Sun: Shafer Unit with David Edelbach
- 28 Sat: East Heinkel Unit with Mike Crowe

April

- 4 Sat: Dot and Doug Unit with Gene St. Louis and Skunk Cabbage tour with Tim Keller at 1:30 pm
- 11 Sat: Rolling Thunder Unit with Sally Baumgardner (planting seeds)
- 14 Tues: Prairie Preservation Society of Ogle County banquet featuring Gerould Wilhelm - call Sally Baumgardner at 815-456-2083 for details
- 18 Sat: Main Unit with Mike Adolph
- 25 Sat: Schafer Unit with David Edelbach

May

- 2 Sat: East Heinkel with Mike Crowe
- 9 Sat: Potluck Gathering (Field Class: Sedges of Nachusa)
- 16 Sat: West Heinkel Unit with Jay Stacy
- 17 Sun: Shafer Unit with David Edelbach
- 23 Sat: Main Unit with Mike Adolph
- 30 Sat: Dot & Doug Unit with Gene St. Louis

June

- 6 Sat: East Heinkel Unit with Mike Crowe followed by a 1:30 pm tour with Sally Baumgardner of Dot & Doug's Knobs
- 13 Sat: Main Unit with Mike Adolph
- 18 Thu: Doug & Dot Unit - Evening Stewardship with Gene St. Louis (5:30 to dark)
- 20 Sat: Schafer Unit with David Edelbach
- 27 Sat: Tour of Daysville Prairies with Howard Fox (meet at Stewards' Barn)

July

- 4 Sat: Holiday - Fourth of July
- 9 Thu: Doug & Dot Unit - Evening Stewardship with Gene St. Louis (5:30 to dark)
- 11 Sat: Temperance Hill workday with Sally B., meet at the Stewards' Barn at 9:30 AND the Annual Ice Cream Social/Barbecue Potluck at 5 pm (new time!)
- 18 Sat: East Heinkel Unit with Mike Crowe
- 19 Sun: Schafer Unit with David Edelbach
- 25 Sat: Dot & Doug Unit with Gene St. Louis

August

- 2 Sun: Clear Creek Unit with Mary Blackmore
- 8 Sat: Rolling Thunder Unit with Sally Baumgardner (seeds)
- 15 Sat: Coneflower Unit with Bill Kleiman
- 22 Sat: Schafer Unit with David Edelbach
- 29 Sat: Rolling Thunder Unit with Sally Baumgardner

September

- 5 Sat: West Heinkel Unit with Jay Stacy
- 12 Sat: Potluck Gathering (Autumn on the Prairie preparation, and Field Class on the Goldenrods and Asters)
- 19 Sat: AUTUMN ON THE PRAIRIE
- 26 Sat: Main Unit with Mike Adolph

27 Sun: Schafer Unit with David Edelbach

October

- 3 Sat: West Heinkel Unit with Jay Satcy
- 4 Sun: 10:30 am. Rolling Thunder Unit with Sally B. (seeds)
- 10 Sat: East Heinkel Unit with Mike Crowe
- 17 Sat: Schafer Unit with David Edelbach
- 24 Sat: Main Unit with Mike Adolph
- 31 Sat: Dot & Doug Unit with Gene St. Louis

November

- 7 Sat: Potluck Gathering (Field Class: Identifying 50 species by their seeds)
- 14 Sat: General Burn Workshop with Bill Kleiman
- 21 Sat: Stone Soup seed processing party
- 28 Sat: Dot & Doug Unit with Gene St. Louis
- 29 Sun: Schafer Unit with David Edelbach

December

- 5 Sat: Dot & Doug Unit with Gene St. Louis
- 12 Sat: Schafer Unit with David Edelbach
- 19 Sat: Buckthorn Bash with Bill Kleiman

All workdays and events start at 9:30 and end at 1:30 unless stated otherwise. Feel free to bring a lunch or snack.

Workgroups meet at the Steward's Barn at 2055 Lowden, and field trips leave from the main entrance on Lowden. Extreme weather conditions will sometimes cause a steward to cancel a workday.

We have on-going stewardship crews all week long during the summer and Monday and Wednesday mornings throughout the year. Call Bill Kleiman for details.

NACHUSA GRASSLANDS UNIT STEWARDS

STEWARDS

Jay Meiners Wetland Unit

Jeff Meiners

Fen Unit

Kevin Kaltenbach

Dot & Doug Unit

Gene St. Louis

Rolling Thunder Unit

Sally Baumgardner

Main Unit

Mike Adolph

East Heinkel Unit

Mike Crowe

West Heinkel Unit

Jay Stacy

Clearcreek Unit

Prairie Preservation Society of Ogle County

Kittentail Unit

West Chicago Prairie Stewards

Schafer Unit

David Edelbach

Science Stewards:

Butterfly Monitoring

Bird Monitoring

Project Ecologist

COSTEWARDS

Steve Meiners

Todd Bittner

Max Baumgardner

Bob Shone

Gene Miller, Ron Ingram

Mary Blackmore

Terri Clark

Mel Hoff

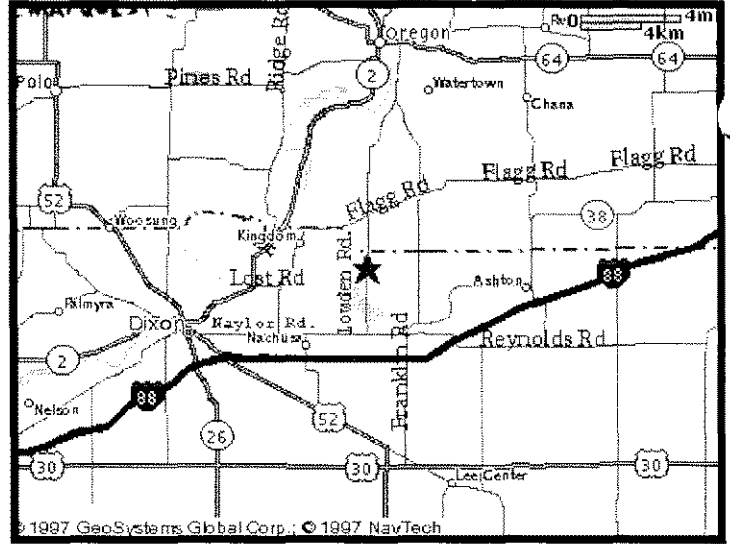
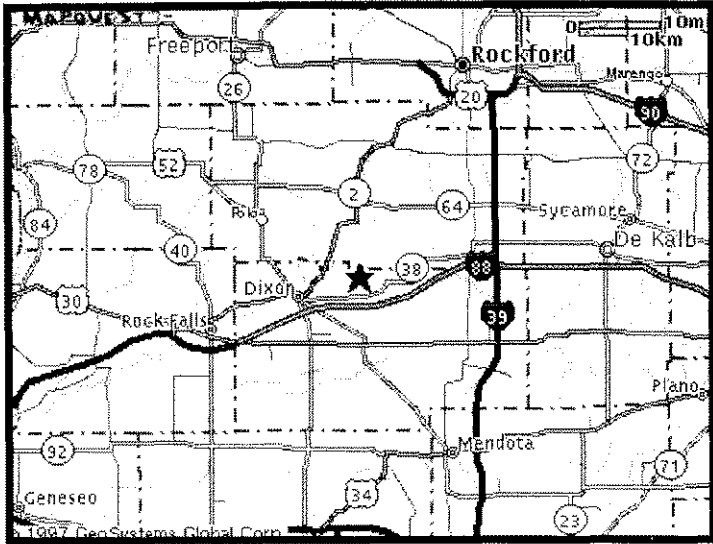
Gerald McDermott

Mike Adolph

Ann Haverstock

Dennis Lubbs

Reaching Nachusa Grasslands



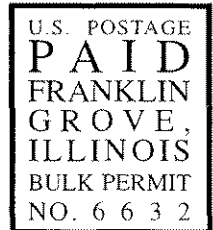
From I-88 (East-West Tollway): Option 1: Exit at Rt. 251 North (Rochelle), to Rt. 38 West. Travel through Ashton and into Franklin Grove, (approx. 16.5 miles), turn right (north) at Daysville Road (sign: "Franklin Creek State Park"). Travel 1.5 miles north to Naylor Road, turn left (west). Then follow the signs leading to the Grasslands. Option 2: Exit at Rt. 251 North (Rochelle), past Rt. 38 to Flagg Road, (sign: "Flagg Center 3 miles"). Travel approx. 14.8 miles to 4-way stop sign at Lowden Road, turn left (south). Approx. 2 miles down the road on the west side of the road will be the Grasslands.

From Rt. 64: At eastern edge of the City of Oregon, turn left (south) on Daysville Road (towards Lowden-Miller State Park). Travel approx. 2.4

miles to Lowden Road, turn right, (still following State Park sign). Travel south approx. 5.3 miles (past the State Park) to a 4-way stop at Flagg Road. Continue south another 2 miles, the Grasslands will be on the righthand (west) side of the road.

From Dixon: Option 1: Take Rt. 38 eastbound into Franklin Grove, turn left (north) on Daysville Road (sign: Franklin Creek State Park). Travel 1.5 miles north to Naylor Road, turn left (west). Then follow the signs leading to the Grasslands. Option 2: Take Rt. 2 north out of Dixon, approx. 2 miles, turn right on Lost Nation Road. Go one mile to Maples Road, turn right, then left almost immediately and follow the signs to the Grasslands.

The Nature Conservancy
Nachusa Grasslands
2055 Lowden Road
Franklin Grove, IL 61031
815-456-2340

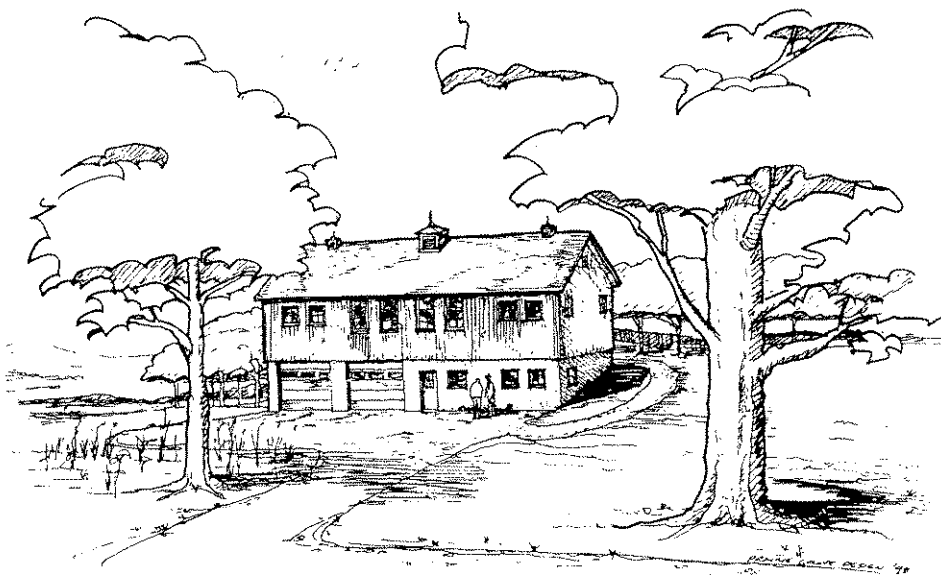


To Our Friend Below or the Current Resident :



Nachusa Grasslands is owned and operated by The Nature Conservancy, a private non-profit group whose mission is to protect plants and animals by protecting the land and water they need to survive.

Nachusa Grasslands Barn Building Fundraiser



This summer, Nachusa Grasslands will be building a multi-purpose barn. The first floor of the barn will be used to store and repair equipment and the second floor will house a small office, bathroom, meeting and storage space. An important part of the first floor will be a heated workshop - useful for winter repairs, storing water pumps during fire season, processing seed, and gathering with volunteers before the workday begins.

The barn will look, as much as possible, like an old-fashioned barn with a cupola, wood siding, old-style windows and a steep roof pitch. If we can find the right historic barn we will move it to the site and restore it to our needs. The area around the building will be landscaped with local native plants. We have received two large donations that have us about half-way to the grand total of \$85,000. Donations of \$50 or more will get your name on the barn builders plaque.

Clip and mail _____

Yes, I can help with the barn building project. Enclosed is my check for \$_____. I understand that for donations of \$50 or more I can have my name on the plaque, or a designated name(s).

The name(s) I want on the plaque are (up to 36 characters including spaces):

____ Please contact me when you start building, I want to supply some volunteer labor.

My Name
Address
City, State

Mail to: Nachusa Grasslands, 2055 Lowden Rd., Franklin Grove, IL 61031