

Dot & Doug Wade Prairie 2007 Planting #77

Title and number of planting: Dot & Doug Wade Prairie 2007 Planting #77

Author of this history: Alan Meier

Revision Date: 04/05/2016

16

Site conditions:

Location: Ogle County, Township 22N, Range 10E, Section 16. This planting is approximately 4.6 acres in size. The planting is rectangular in shape. The coordinates of the boundary corners are:

southwest corner: N 41°53'30.2", W 089°21'12.5'

northwest corner: N 41°53'33.8", W 089°21'20.3'

northeast corner: N 41°53'33.8", W 089°21'12.6'

southeast corner: N 41°53'30.1", W 089°21'12.2'

The site is bordered by Dot's Knob on the east, the Dot & Doug Wade Prairie 2006 Planting #69 on the south, a heavily wooded area on the west (off preserve), and a cornfield (2010 Planting #99) on the north.

Soil types: According to the Ogle County Soil Study, soils include

Eastern half of the planting: #727B Waukee loam, 1 to 5 percent slopes – gently sloping, well drained soils on uplands and slightly elevated terraces along streams.

Western half of the planting: #779B Chelsea loamy sand, 1 to 7 percent slopes – gently sloping excessively drained soil on low, hummocky dunes on broad stream terraces and uplands.

My on-site observations revealed that there are two areas of the planting where the soil is much sandier than the rest of the planting: the northeast corner nearest Dot's Knob and a sandy ridge extending from the cornfield (2010 Planting #99) to the north into the west-central portion of the planting. The planting is at the mid-section of a 30 acre field that slopes downward from north to south.

Topographic features: The planting is relatively flat. The northeastern corner, nearest to Dot's Knob has a rise in elevation. There is also a slight rise in elevation in the sandy ridge running through much of the west-central part of the planting. A drainage flows into the planting from the north and bisects the entire planting east to west, flowing into the Dot & Doug Wade Prairie 2006 Planting #69 on the south.

Site History

This planting probably had been in row crop production from at least 1939 until 1994. The 1939 aerial photo is a little dark over this area, but it appears to already be in row crops. The 1958 aerial clearly shows that the planting was in row crops at that time and

Dot & Doug Wade Prairie 2007 Planting #77

continuously until 1994, when Bill Kleiman, Kevin Kaltenbach, and a few other stewards spread combine mix, not hand-collected mix, over the entire field that includes this planting. The mix contained mostly little bluestem. They did not plant enough seed, nor did they cover the planting evenly. They had expected to add more seed, but ran out. This planting did poorly, filling in with cool season grasses, some native prairie plants, and a lot of *Rubus*, invasive honeysuckle, and box elder seedlings from the fence line to the west.

Bill soon wanted to put the site back in corn, but Gene St. Louis, the unit's steward, decided to over-seed it instead. The field languished for a decade. It was mowed once or twice a year to knock down the woody plants. Gene over-seeded a good mix of species, but there was no apparent improvement. After several years of over-seeding, Bill had a farmer spray the area in the fall with a mix of Crossbow and Roundup. Then the farmer plowed it and planted corn in the spring. The corn was in this planting for four years.

Site Preparations:

After the 2007 corn crop was harvested, the planting was mowed and then burned in early November. On November 14 the planting was harrowed by the crew. The bulk of the planting was completed on November 16 and 17. The field was then harrowed again on November 21

Seed planting:

Planting was performed by Alan Meier, steward of the Dot & Doug Wade Prairie, with the help of his brother, Paul Meier.

Seed planting began on November 16. The seed was mixed in the middle of the planting prior to spreading the seed. The majority of the seed was planted using a pendulum seed broadcaster attached to a small Kubota tractor. Three full passes of the planting were made, all on November 16. For the first two passes the setting on the broadcaster was 18. For the third pass, a setting of 12 was used. Seed barrels were used to mark the areas where the seed was being sown. Two of the passes were from north to south and one pass was from east to west. For much of that day, Paul hand planted Thimbleweed, tossing down small amounts of seed and then stepping in many of them.

On November 17 Al continued with the planting efforts by hand planting and foot-smearing several species. In addition, he hand-inserted 300 porcupine grass seeds directly into the soil. Note that when the planting was harrowed a few days later, the crew avoided the area where the porcupine grass had been planted. On that same day, Al hand-sowed Illinois Tick Trefoil, Whorled Milkweed, and Thimbleweed.

On December 7 Al hand-sowed the remaining Whorled Milkweed and Thimbleweed onto a five inch base of fresh snow, much of which was foot pressed down into the snow.

Dot & Doug Wade Prairie 2007 Planting #77

Seed list:

Approximately 263 pounds of seed (including chaff and stems) were planted. A total of 112 species were included. Most of the seed was hand-harvested by Alan and Mary Meier, all of it in 2007. The mix included almost 13 pounds of little bluestem which was machine harvested by the crew. The bulk seed per acre average was 57.28 pounds.

Scientific Name	Common Name	Weight (lbs)
<i>Agastache scrophulariaefolia</i>	Purple Giant Hyssop	0.05
<i>Allium cernuum</i>	Nodding Wild Onion	2.09
<i>Amorpha canescens</i>	Lead Plant	11.53
<i>Andropogon (Schizachyrium) scoparium</i>	Little Bluestem	12.74
<i>Anemone canadensis</i>	Meadow Anemone	0.01
<i>Anemone cylindrica</i>	Thimbleweed	1.02
<i>Antennaria plantaginifolia</i>	Pussy Toes	1.16
<i>Aristida purpurascens</i>	Arrow Feather (three-awn grass)	1.07
<i>Artemisia caudata (campestris)</i>	Beech Wormwood	2.42
<i>Asclepias verticillata</i>	Whorled milkweed	0.28
<i>Aster azureus (oolentangiensis)</i>	Sky-blue Aster	0.98
<i>Aster ericoides</i>	Heath Aster	4.14
<i>Aster laevis</i>	Smooth Aster	0.74
<i>Aster linariifolius</i>	Stiff Aster	1.16
<i>Aster novae-angliae</i>	New England Aster	0.23
<i>Aster oblongifolius</i>	Aromatic Aster	0.70
<i>Aster ptarmicoides</i>	White Aster (Stiff Aster)	0.05
<i>Aster sericeus</i>	Silky Aster	2.88
<i>Astragalus canadensis</i>	Canada Milk Vetch	2.32
<i>Baptisia leucantha</i>	White Wild Indigo	21.58
<i>Baptisia leucophaea</i>	Cream Wild Indigo	8.51
<i>Bouteloua curtipendula</i>	Side Oats Gramma	0.98
<i>Bouteloua hirsuta</i>	Moustache Grass (Hairy Grama)	0.01
<i>Cacalia atriplicifolia</i>	Pale Indian Plantain	0.28
<i>Carex bicknellii</i>	Bicknell's sedge	1.49
<i>Carex muehlenbergii</i>	Muhlenberg's sedge Carex muehlenbergii	0.09
<i>Ceanothus americanus</i>	New Jersey Tea	0.28
<i>Chrysopsis camporum (Heterotheca)</i>	Golden Prairie Aster	0.19
<i>Cirsium hillii</i>	Hill's Thistle	0.05
<i>Clematis virginiana</i>	Virgin's Bower	0.05
<i>Comandra umbellata</i>	False Toadflax	0.01
<i>Coreopsis lanceolata</i>	Sand Coreopsis	0.03
<i>Coreopsis palmata</i>	Prairie Coreopsis	1.49
<i>Coreopsis tripteris</i>	Tall Coreopsis	0.84
<i>Cyperus filiculmis</i>	Slender Sand Sedge	0.09
<i>Danthonia spicata</i>	Poverty Oat Grass	0.42
<i>Desmodium illinoense</i>	Illinois Tick Trefoil	1.20

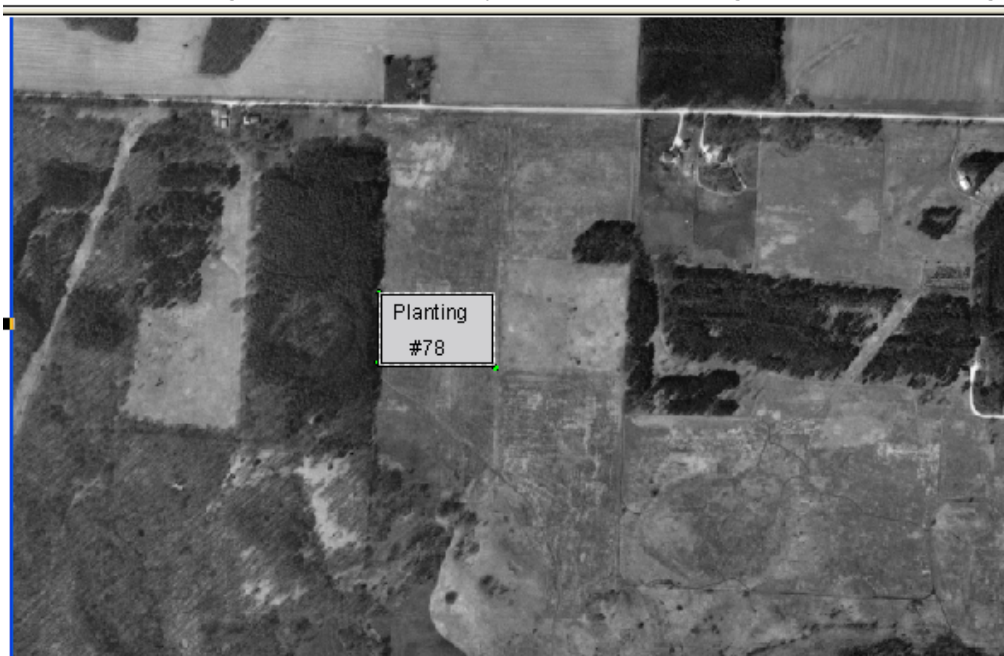
Dot & Doug Wade Prairie 2007 Planting #77

<i>Dodecantheon meadia</i>	Shooting Star	0.23
<i>Echinacea pallida</i>	Pale Purple Coneflower	42.45
<i>Elymus canadensis</i>	Canada Wild Rye	3.91
<i>Eragrostis spectabilis</i>	Purple Love Grass	0.19
<i>Eryngium yuccifolium</i>	Rattlesnake Master	3.12
<i>Eupatorium altissimum</i>	Tall Boneset	0.98
<i>Euphorbia corollata</i>	Flowering Spurge	4.84
<i>Gentiana puberulenta</i>	Prairie Gentian	0.09
<i>Geum triflorum</i>	Prairie Smoke	0.01
<i>Helianthemum canadense</i>	Common Rockrose (Frostweed)	0.74
<i>Helianthus occidentalis</i>	Western Sunflower	1.21
<i>Helianthus rigidus (laetiflorus)</i>	Prairie Sunflower	0.51
<i>Heliopsis helianthoides</i>	False Sunflower	1.12
<i>Heuchera richardsonii grayana</i>	Alum Root	0.09
<i>Hieracium longipilum</i>	Hairy Hawkweed	0.05
<i>Houstonia (Hedyotis) longifolia (canadense)</i>	Long-Leaved Bluets	0.02
<i>Juncus greenii</i>	Greene's Rush	0.19
<i>Koeleria cristata (macrantha)</i>	Prairie June Grass	3.67
<i>Krigia virginica</i>	Dwarf Dandelion	0.01
<i>Kuhnia (Brickellia) eupatorioides</i>	False Boneset	2.88
<i>Lechea stricta</i>	Bushy Pinweed	0.09
<i>Lechea tenuifolia</i>	Slender-Leaved Pinweed	0.84
<i>Lechea villosa (mucronata)</i>	Hairy Pinweed	0.47
<i>Lespedeza capitata</i>	Round-headed Bush Clover	5.02
<i>Liatris aspera</i>	Rough Blazing Star	18.37
<i>Liatris cylindracea</i>	Dwarf Blazingstar	0.01
<i>Liatris pycnostachya</i>	Prairie Blazing Star, Tall Gayfeather	2.09
<i>Lithospermum incisum</i>	Fringed Puccoon	0.01
<i>Lobelia spicata</i>	Pale-spiked Lobelia	0.01
<i>Lysimachia lanceolata</i>	Lance-Leaved Loosestrife	0.01
<i>Monarda fistulosa</i>	Wild Bergamot	0.47
<i>Opuntia humifusa (compressa)</i>	Prickly Pear Cactus	0.10
<i>Oxalis violacea</i>	Violet Wood Sorrel	0.05
<i>Panicum oligoanthos</i>	Scribner's Panic Grass	2.05
<i>Parthenium integrifolium</i>	Wild Quinine	13.72
<i>Paspalum ciliatifolium muhlenbergii</i>	Hairy Lens Grass	0.01
<i>Penstemon digitalis</i>	Foxglove Beard Tongue	0.19
<i>Penstemon hirsutus</i>	Hairy Beard tongue	0.03
<i>Petalostemum (Dalea) candidum</i>	White Prairie Clover	0.70
<i>Petalostemum (Dalea) purpurea</i>	Purple Prairie Clover	12.28
<i>Polygala polygama obtusata</i>	Purple Milkwort	0.02
<i>Polygala sanguinea</i>	Field Milkwort	0.03
<i>Polytaenia nuttallii</i>	Prairie Parsley	0.09
<i>Potentilla arguta</i>	Prairie Tall Cinquefoil	3.67
<i>Pseudognaphalium obtusifolium</i>	Sweet Everlasting	0.88
<i>Pycnanthemum tenuifolium</i>	Slender Mountain Mint	2.88
<i>Pycnanthemum virginianum</i>	Common Mountain Mint	0.28

Dot & Doug Wade Prairie 2007 Planting #77

<i>Rosa carolina</i>	Pasture Rose	3.91
<i>Rudbeckia hirta</i>	Black-eyed Susan	0.42
<i>Rudbeckia subtomentosa</i>	Sweet Black Eyed Susan	1.12
<i>Senecio plattensis</i>	Prairie Ragwort	0.37
<i>Silene antirrhina</i>	Sleepy Catchfly	0.01
<i>Silphium integrifolium</i>	Rosin Weed	3.72
<i>Silphium laciniatum</i>	Compass Plant	3.62
<i>Silphium perfoliatum</i>	Cup Plant	1.02
<i>Silphium terebinthinaceum</i>	Prairie Dock	0.05
<i>Solidago grammifolia</i>	Grass-Leaved Goldenrod	1.02
<i>Solidago missouriensis</i>	Missouri Goldenrod	0.79
<i>Solidago nemoralis</i>	Old Field Goldenrod	3.02
<i>Solidago speciosa</i>	Showy Goldenrod	3.58
<i>Sporobolus heterolepis</i>	Prairie Dropseed	0.60
<i>Stipa spartea</i>	Porcupine Grass	0.30
<i>Tephrosia virginiana</i>	Goat's Rue	8.42
<i>Teucrium canadense</i>	American Germander (Wood Sage)	0.84
<i>Tradescantia ohiensis</i>	Common Spiderwort	2.93
<i>Triosteum aurantiacum</i>	Orange-fruited Horse Gentian (Wild Coffee)	4.14
<i>Triosteum perfoliatum</i>	Orange Fruited Horse Gentain	0.09
<i>Verbena stricta</i>	Hoary vervain	3.12
<i>Verbena urticifolia</i>	White Vervain	1.16
<i>Veronicastrum virginicum</i>	Culver's Root	3.91
<i>Viola pedata</i>	Birdsfoot Violet	0.06
<i>Viola sagittata</i>	Arrow-leaved Violet	0.01
<i>Zizia aptera</i>	Heart-leaved Meadow Parsnip	0.05
<i>Zizia aurea</i>	Golden Alexander	1.16
112	Total species count	
	Total seed weight	263.28

Map:



Dot & Doug Wade Prairie 2007 Planting #77

Lessons learned:

Approximately eight hours was spent hand broadcasting a large amount of Thimbleweed. In future years' I'll mill the Thimbleweed with some other species (likely Canada Rye) and include it in the seed mix that is planted using the pendulum seed broadcaster.

2008 Follow up notes

2008 was a year of exceptionally large amounts of precipitation. The planting appeared to be a success with a large number of native species throughout the planting. The planting was swept for weeds, mainly Queen Anne's Lace, in the summer.

At the end of June, a half dozen Sand Fameflower (*Talinum rugospermum*) plants that had been grown in pots were transplanted into the sandy ridge along the north central boundary of the planting.

The planting was over-seeded in 2008 with just over 18 lbs. of seed from a total of eighteen species. The little bluestem, sky-blue asters, and golden alexanders were mixed together. They were distributed over the entire planting by Alan Meier on December 12, 2008 using the pendulum broadcast spreader attached to the Kubota tractor. There were a couple inches of melting snow on the ground at the time. Most of the remaining seeds were carefully raked into the soil by Alan and Mary Meier on December 28, 2008. The gentians were distributed throughout the planting. The remaining seeds were planted exclusively in the two sandy areas described in the site conditions section of this report. The Porcupine Grass was planted by hand on March 7, 2009.

Scientific Name	Common Name	Weight (lbs)
<i>Anemone patens (Pulsatilla p.)</i>	Pasque Flower	0.01
<i>Aster azureus (oolentangiensis)</i>	Sky-blue Aster	4.40
<i>Aster linariifolius</i>	Stiff Aster	0.45
<i>Aster oblongifolius</i>	Aromatic Aster	0.25
<i>Aster ptarmicoides</i>	White Aster (Stiff Aster)	0.25
<i>Castilleja sessiliflora</i>	Downy Yellow Painted Cup	0.01
<i>Gentiana (alba) flavida</i>	Cream Gentian	0.12
<i>Gentiana puberulenta</i>	Prairie Gentian	0.10
<i>Geum triflorum</i>	Prairie Smoke	0.01
<i>Houstonia (Hedyotis) longifolia (canadense)</i>	Long-Leaved Bluets	0.01
<i>Isanthus (Trichostema) brachiatus (m)</i>	False Pennyroyal	0.01
<i>Krigia virginica</i>	Dwarf Dandelion	0.05
<i>Liatris cylindracea</i>	Dwarf Blazingstar	0.03
<i>Opuntia humifusa (compressa)</i>	Prickly Pear Cactus	0.10
<i>Andropogon (Schizachyrium) scoparium</i>	Little Bluestem	10.75
<i>Sisyrinchium campestre</i>	Prairie Blue-eyed Grass	0.01
<i>Stipa spartea</i>	Porcupine Grass	0.05
<i>Zizia aurea</i>	Golden Alexander	2.00
	Total item weight	18.14

Dot & Doug Wade Prairie 2007 Planting #77

2009 Follow up notes

On April 4, 2009 a small butter dish full of New Jersey Tea (*Ceanothus americanus*) was hand planted by Alan Meier. Most of the seeds were planting using the foot-smear method, but a number were planted individually and lightly covered with soil. The seed had been obtained from the Byron Forest Preserve and prepared by Bernie Buchholz (scarified at 180 degrees F and then frozen).

In May, 2009 one Prairie Willow (*Salix humilis*) bush was planted in the SE corner of the planting. In September, 2009 another Prairie Willow (*Salix humilis*) bush was planted near the other one. These were both grown by Larry Creekmur from seed obtained at Nachusa.

2010 Follow up notes

The planting was burned for the first time on 3/17/2010. The burn was very thorough over the entire planting.

After the burn, the planting was overseeded with seeds collected in 2009. The “hand-plant” items were sown on 3/18/2009 and 3/31/2009 by Alan Meier. The general, mesic, and dry-mesic mixes were sown on 3/20/2010 by hand by Alan Meier, Mary Meier, Ron Ingraham, Hank Hartman, and 2 NIU students. They were spread on a one inch bed of wet snow.

Scientific Name	Common Name	Weight (lbs)	Mix
<i>Allium cernuum</i>	Nodding Wild Onion	0.15	M
<i>Amorpha canescens</i>	Lead Plant	2.00	G
<i>Amorpha fruticosa</i>	Indigo Bush	0.25	G
<i>Anemone cylindrica</i>	Thimbleweed	0.05	G
<i>Antennaria plantaginifolia</i>	Pussy Toes	1.10	G
<i>Apocynum ??</i>	Dogbane	0.20	H
<i>Aristida purpurascens</i>	Arrow Feather (three-awn grass)	1.50	G
<i>Asclepias incarnata</i>	Swamp Milkweed	0.05	M
<i>Asclepias verticillata</i>	Whorled milkweed	0.10	G
<i>Aster ???</i>	Mesic Aster (crooked, swamp, ???)	0.60	M
<i>Aster linariifolius</i>	Stiff Aster	2.05	D
<i>Aster oblongifolius</i>	Aromatic Aster	0.70	D
<i>Aster ptarmicoides</i>	White Aster (Stiff Aster)	0.05	H
<i>Baptisia leucophaea</i>	Cream Wild Indigo	0.50	D
<i>Bouteloua curtipendula</i>	Side Oats Gramma	0.35	G
<i>Carex bicknellii</i>	Bicknell's sedge	1.35	G
<i>Cirsium hillii</i>	Hill's Thistle	0.01	H
<i>Comandra umbellata</i>	False Toadflax	0.01	H

Dot & Doug Wade Prairie 2007 Planting #77

<i>Coreopsis palmata</i>	Prairie Coreopsis	3.40	G
<i>Coreopsis tripteris</i>	Tall Coreopsis	0.25	M
<i>Cyperus filiculmis</i>	Slender Sand Sedge	0.01	D
<i>Dodecantheon meadia</i>	Shooting Star	2.70	G
<i>Eryngium yuccifolium</i>	Rattlesnake Master	2.90	M
<i>Euphorbia corollata</i>	Flowering Spurge	0.10	G
<i>Gentiana (alba) flavida</i>	Cream Gentian	0.30	H
<i>Gentiana puberulenta</i>	Prairie Gentian	0.01	H
<i>Geum triflorum</i>	Prairie Smoke	0.01	H
<i>Helianthus occidentalis</i>	Western Sunflower	2.35	G
<i>Heuchera richardsonii grayana</i>	Alum Root	0.15	G
<i>Hieracium longipilum</i>	Hairy Hawkweed	0.06	D
<i>Koeleria cristata (macrantha)</i>	Prairie June Grass	4.25	G
<i>Krigia virginica</i>	Dwarf Dandelion	0.01	H
<i>Kuhnia (Brickellia) eupatorioides</i>	False Boneset	0.75	G
<i>Lespedeza capitata</i>	Round-headed Bush Clover	1.75	G
<i>Liatris aspera</i>	Rough Blazing Star	15.90	G
<i>Liatris cylindracea</i>	Dwarf Blazingstar	0.05	H
<i>Liatris pycnostachya</i>	Prairie Blazing Star, Tall Gayfeather	2.80	M
<i>Parthenium integrifolium</i>	Wild Quinine	6.95	G
<i>Petalostemum (Dalea) candidum</i>	White Prairie Clover	0.25	D
<i>Petalostemum (Dalea) purpurea</i>	Purple Prairie Clover	3.20	D
<i>Polygala polygama obtusata</i>	Purple Milkwort	0.01	H
<i>Pycnanthemum tenuifolium</i>	Slender Mountain Mint	0.70	G
<i>Salix humilis</i>	Prairie Willow	0.05	H
<i>Silphium perfoliatum</i>	Cup Plant	2.65	M
<i>Tephrosia virginiana</i>	Goat's Rue	7.85	D
<i>Tradescantia ohiensis</i>	Common Spiderwort	7.50	G
<i>Verbena hastata</i>	Blue Vervain	1.10	M
<i>Veronicastrum virginicum</i>	Culver's Root	1.80	M
<i>Viola pedata</i>	Birdsfoot Violet	0.05	H
<i>Zizia aptera</i>	Heart-leaved Meadow Parsnip	0.03	H
	Total item weight	80.06	

Mixes: G = General, M = Mesic, D = Dry Mesic, H = Hand-plant

An inventory of the planting conducted by Jay Stacey and Bill Kleiman, and continuously updated by Al Meier, revealed a minimum of seventy-two native plant species. The planting was relatively free of weeds. The biggest problem area was the drainage that runs north to south the length of the planting, with poison hemlock and Canada goldenrod in the wettest areas.

On May 29, 2010 a flat of 38 Prairie Dropseed (*Sporobolus heterolepis*) plugs was planted on the eastern part of the planting. Every one of these plants appeared to survive throughout the growing season.

Dot & Doug Wade Prairie 2007 Planting #77

On November 29, 2010, another burn of this planting was attempted at the same time as the burn of the corn stubble for the Dot & Doug Wade Prairie 2010 Planting #99 to the north. Only about fifty percent of the planting burned successfully, with the north to south drainage area and the southwest corner of the planting remaining unburned.



Photo of stewards Mary and Alan Meier in 2007 planting taken in August, 2010 by Hank Hartman

2011 Follow up notes

On January 2, 2011, Mary and Al Meier spread 18 lbs of Little Bluestem (*Andropogon (Schizachyrium) scoparium*) seed throughout and along the edges of the planting. In addition, they spread 1 lbs of Prairie Dropseed (*Sporobolus heterolepis*) seed in the west central portion of the planting that had been burned in November, 2010. Also, a 14.5 lbs seed mix, comprised of asters (*Aster azureus* and *Aster laevis*), round-headed bush clover (*Lespedeza capitata*), slender mountain mint (*Pycnanthemum tenuifolium*), and white indigo (*Baptisia leucantha*) was broadcast along the weedy eastern edge of both the 2006 and 2007 plantings, between the plantings and the two-track.

On April 12, 2011, a burn of the planting was attempted again. Although more of the planting burned, some of the north to south drainage area still did not burn. A total of

Dot & Doug Wade Prairie 2007 Planting #77

approximately seventy-five percent of the planting burned in either the November, 2010 or April, 2011 burns.

Below is a list of the seeds planted in 2011. Some of the early-season seeds were planted shortly after they were picked. Others were planted at the end of the harvest season. They were all carefully planted to ensure contact of the seed with the ground. In some cases, a PVC pipe was used to direct the seed onto bare soil.

Scientific Name	Common Name	Weight (lbs)	Date Planted
<i>Amorpha canescens</i>	Lead Plant	6.55	11/27/2011
<i>Antennaria neglecta</i>	Field Cat's Foot	0.02	6/12/2011
<i>Antennaria plantaginifolia</i>	Pussy Toes	0.38	6/12/2011
<i>Baptisia leucophaea</i>	Cream Wild Indigo	4.50	11/19/2011
<i>Oxalis violacea</i>	Violet Wood Sorrel	0.05	6/24/2011
<i>Petalostemum (Dalea) candidum</i>	White Prairie Clover	1.10	11/27/2011
<i>Petalostemum (Dalea) purpurea</i>	Purple Prairie Clover	5.25	11/27/2011
<i>Silphium terebinthinaceum</i>	Prairie Dock	1.05	11/27/2011
<i>Viola pedata</i>	Birdsfoot Violet	0.10	6/12/2011
<i>Viola pedatifida</i>	Prairie Violet	0.01	6/12/2011
<i>Viola sagittata</i>	Arrow-leaved Violet	0.01	6/24/2011
Total weight		19.02	

2012 Follow up notes

The planting was burned in March 2012. The burn was very thorough over the entire planting.

The drainage that runs north to south down the center of the planting has washed out numerous times over the years. In December, 2012, Al Meier spread the following seeds in that drainage area.

Scientific Name	Common Name	Total Weight
<i>Allium cernuum</i>	Nodding Wild Onion	0.06
<i>Amorpha canescens</i>	Lead Plant	5.02
<i>Anemone cylindrica</i>	Thimbleweed	0.15
<i>Antennaria neglecta</i>	Field Cat's Foot	0.04
<i>Antennaria plantaginifolia</i>	Pussy Toes	0.17
<i>Apocynum androsaemifolium</i>	Spreading Dogbane	0.02
<i>Aristida purpurascens</i>	Arrow Feather (three-awn grass)	0.04
<i>Artemisia caudata (campestris)</i>	Beech Wormwood	0.26
<i>Asclepias verticillata</i>	Whorled milkweed	0.01
<i>Aster azureus (oolentangiensis)</i>	Sky-blue Aster	0.66
<i>Aster ericoides</i>	Heath Aster	0.92
<i>Aster laevis</i>	Smooth Aster	0.48

Dot & Doug Wade Prairie 2007 Planting #77

<i>Aster linariifolius</i>	Stiff Aster	0.15
<i>Aster novae-angliae</i>	New England Aster	0.12
<i>Aster oblongifolius</i>	Aromatic Aster	0.02
<i>Aster sericeus</i>	Silky Aster	0.39
<i>Astragalus canadensis</i>	Canada Milk Vetch	0.20
<i>Baptisia leucantha</i>	White Wild Indigo	2.00
<i>Baptisia leucophaea</i>	Cream Wild Indigo	0.33
<i>Bouteloua curtipendula</i>	Side Oats Gramma	0.02
<i>Cacalia atriplicifolia</i>	Pale Indian Plantain	0.14
<i>Carex bicknellii</i>	Bicknell's sedge	0.29
<i>Chrysopsis camporum (Heterotheca)</i>	Golden Prairie Aster	0.04
<i>Comandra umbellata</i>	False Toadflax	0.01
<i>Coreopsis palmata</i>	Prairie Coreopsis	0.62
<i>Coreopsis tripteris</i>	Tall Coreopsis	0.11
<i>Desmanthus illinoense</i>	Ill. Bundleflower (Sensitive Plant)	0.03
<i>Dodecantheon meadia</i>	Shooting Star	0.02
<i>Echinacea pallida</i>	Pale Purple Coneflower	6.68
<i>Elymus canadensis</i>	Canada Wild Rye	1.04
<i>Eragrostis spectabilis</i>	Purple Love Grass	0.01
<i>Erigeron strigosus</i>	Daisy Fleabane	0.06
<i>Eryngium yuccifolium</i>	Rattlesnake Master	0.61
<i>Eupatorium altissimum</i>	Tall Boneset	0.04
<i>Euphorbia corollata</i>	Flowering Spurge	0.32
<i>Gaura biennis pitcheri (longiflora)</i>	Common Gaura	0.04
<i>Gentiana (alba) flavida</i>	Cream Gentian	0.08
<i>Gentiana puberulenta</i>	Prairie Gentian	0.02
<i>Helianthemum canadense</i>	Common Rockrose (Frostweed)	0.05
<i>Helianthus occidentalis</i>	Western Sunflower	0.41
<i>Heliopsis helianthoides</i>	False Sunflower	0.08
<i>Heuchera richardsonii grayana</i>	Alum Root	0.02
<i>Juncus interior</i>	Inland Rush	0.12
<i>Juncus tenuis</i>	Path Rush	0.01
<i>Koeleria cristata (macrantha)</i>	Prairie June Grass	0.22
<i>Kuhnia (Brickellia) eupatorioides</i>	False Boneset	0.46
<i>Lespedeza capitata</i>	Round-headed Bush Clover	1.08
<i>Liatis aspera</i>	Rough Blazing Star	0.71
<i>Liatis pycnostachya</i>	Prairie Blazing Star, Tall Gayfeather	0.11
<i>Lupinus perennis</i>	Wild Lupine	1.67
<i>Monarda fistulosa</i>	Wild Bergamot	0.10
<i>Monarda punctata villicualis</i>	Horse Mint	0.03
<i>Oenothera biennis canescens</i>	Common Evening Primrose	0.02
<i>Oenothera clelandii (rhombipetala)</i>	Sand Evening Primrose	0.01
<i>Panicum oligosanthos</i>	Scribner's Panic Grass	0.22
<i>Panicum virgatum</i>	Prairie Switch Grass	0.04
<i>Parthenium integrifolium</i>	Wild Quinine	3.98
<i>Paspalum ciliatifolium muhlenbergii</i>	Hairy Lens Grass	0.01
<i>Penstemon digitalis</i>	Foxglove Beard Tongue	0.12
<i>Penstemon hirsutus</i>	Hairy Beard tongue	0.04
<i>Petalostemum (Dalea) candidum</i>	White Prairie Clover	0.48

Dot & Doug Wade Prairie 2007 Planting #77

<i>Petalostemum (Dalea) purpurea</i>	Purple Prairie Clover	1.28
<i>Potentilla arguta</i>	Prairie Tall Cinquefoil	0.29
<i>Pseudognaphalium obtusifolium</i>	Sweet Everlasting	0.04
<i>Pycnanthemum tenuifolium</i>	Slender Mountain Mint	0.37
<i>Pycnanthemum virginianum</i>	Mountain mint (Prairie Hyssop)	0.28
<i>Ratibida pinnata</i>	Yellow Coneflower	0.01
<i>Rosa carolina</i>	Pasture Rose	0.22
<i>Rudbeckia hirta</i>	Black-eyed Susan	0.10
<i>Rudbeckia subtomentosa</i>	Sweet Black Eyed Susan	0.16
<i>Senecio pauperculus</i>	Balsom Ragwort	0.05
<i>Silphium integrifolium</i>	Rosin Weed	0.32
<i>Silphium laciniatum</i>	Compass Plant	1.23
<i>Silphium perfoliatum</i>	Cup Plant	0.06
<i>Silphium terebinthinaceum</i>	Prairie Dock	0.14
<i>Sisyrinchium albidum</i>	Common Blue-eyed Grass	0.02
<i>Solidago (Euthamia) graminifolia</i>	Viscid Bushy Goldenrod	0.09
<i>Solidago grammifolia</i>	Grass-Leaved Goldenrod	0.96
<i>Solidago missouriensis</i>	Missouri Goldenrod	0.12
<i>Solidago nemoralis</i>	Old Field Goldenrod	0.25
<i>Solidago speciosa</i>	Showy Goldenrod	0.07
<i>Sporobolus heterolepis</i>	Prairie Dropseed	0.16
<i>Tephrosia virginiana</i>	Goat's Rue	0.62
<i>Tradescantia ohiensis</i>	Common Spiderwort	1.28
<i>Triosteum aurantiacum</i>	Orange-fruited Horse Gentian	0.26
<i>Verbena stricta</i>	Hoary vervain	0.43
<i>Verbena urticifolia</i>	White Vervain	0.18
<i>Veronicastrum virginicum</i>	Culver's Root	0.21
<i>Zizia aptera</i>	Heart-leaved Meadow Parsnip	0.03
<i>Zizia aurea</i>	Golden Alexander	0.26
	Total seed weight	40.70
	Total species count	91

2013 Follow up notes

The planting was burned in March 2013. The burn was very thorough over the entire planting.

In December 2013, 2.35 lbs. of Cream Baptisia (*Baptisia leucophaea*) was overseeded in the planting.

2014 Follow up notes

The planting was burned on March 29, 2014. The burn was thorough over the entire planting.

Dot & Doug Wade Prairie 2007 Planting #77

In November 2014, 6 lbs. of cut Prairie Dropseed (*Sporobolus heterolepis*) was stepped into the soil on the eastern side of the planting.

2015 Follow up notes

The planting was burned in the spring of 2015. In July 2015, the following seeds were stepped in to the soil.

<i>Antennaria plantaginifolia</i>	Pussy Toes	1.23
<i>Oxalis violacea</i>	Violet Wood Sorrel	0.10
<i>Sisyrinchium albidum</i>	Common Blue-eyed Grass	0.12
<i>Viola pedata</i>	Birdsfoot Violet	0.08

2016 Follow up notes

The planting was burned in March 2016. The burn was very thorough over the entire planting.