

## Planting 72 – Franklin Creek Natural Area – 2007

Week of November 26, 2007 by Bill Kleiman

John Heneghan was shown how to run the New Idea seed planter using my GMC Jimmy and our new TeeJet GPS guidance system. I hear it worked well. We overseeded about half of the total seed that Mike Crowe contract picked for FCNA. This north 10 acres was at the end of year one. It had been mowed too short, but likely with no damage, by the farmer. We overseeded it at a rate somewhere between 7 and 10 pounds per acre. I made a .pdf out of Mike Crowe's hand written list. That should be in the same folder.

The planting 73 was showing lots of short little bluestem rusty colored tufts. I think I was seeing *Penstemon digitalis* and some other species. I think this planting will do well enough. We need another year to know.

We saved half of the seed for the S 10 acres, aka planting 73. Bittner plans to burn in spring and we would over seed it after.

Seed harvest list for Franklin Creek Natural Area planting. This planting is on the south side of Naylor Road, across from the Nachusa planting number 14. This approximately 20-acre row crop field was purchased in about 1994 by the Conservancy and sold to DNR. It was in row crops for years. We planted the south half in January 2006 with an airblown boom truck and the north half in January 2007 with same equipment. This list is for the Jan 2007 planting. The seed was collected by Chris Hauser and Becky Hartman, two accomplished seed collectors. All seed harvested from Nachusa and stored in the Nachusa barn. - BK 4/11/07

<u>Latin Name</u>	<u>Common Name</u>	<u>Habitat</u>	<u>FCSNA</u>
Agrostis hyemalis	Tickle Grass	dry	trace
Allium canadense	Canada Wild Onion	dry	trace
Allium cernuum	Nodding Wild Onion	dry	3.00
Amorpha canescens	Leadplant	dry	trace
Andropogon gerardii	Big Bluestem	dry	11.00
Andropogon scoparius	Little Bluestem	dry	32.00
Anemone cylindrica	Thimbleweed	dry	2.10
Antennaria neglecta	Pussytoes	dry	0.15
Antennaria plantaginifolia	Pussytoes	dry	0.15
Arabis glabra	Tower Mustard	dry	trace
Aristida purpurascens	Three Awn Grass	dry	1.20
Artemisia caudata	Beach Wormwood	dry	2.50
Asclepias syriaca	Common Milkweed	dry+mesic	0.50
Asclepias verticillata	Whorled Milkweed	dry	trace
Aster azureus	Sky Blue Aster	dry	1.00
Aster ericoides	Heath Aster	dry+mesic	10.00
Aster lineariifolius	Flax Leaved Aster	dry	1.00
Aster sericeus	Silky Aster	dry	0.70
Astragalus canadensis	Canada Milkvetch	dry	trace
Baptisia leucantha	White Wild Indigo	dry+mesic	5.00
Bouteloua curtipendula	Side-Oats Grama	dry	1.30
Cacalia atriplicifolia	Pale Indian Plantain	dry	1.30
Carex bicknellii	Bicknell's Sedge	dry	2.00
Carex brevior	Plains Oval Sedge	dry	0.30
Carex muhlenbergii	Muhlenberg's Sedge	dry	0.30
Cassia fasciculata	Partridge Pea	dry	trace
Chrysopsis camporum	Golden Aster	dry	trace
Coreopsis palmata	Prairie Coreopsis	dry	0.70
Coreopsis tripteris	Tall Coreopsis	dry+mesic	1.00
Corylus americanus	American Hazelnut	dry	trace
Dalea candida	White Prairie Clover	dry	trace
Dalea purpurea	Purple Prairie Clover	dry	11.20
Danthonia spicata	Poverty Oats Grass	dry	0.30
Desmodium canadense	Showy Ticktrefoil	dry	trace
Desmodium illinoiense	Illinois Ticktrefoil	dry	trace
Dodecatheon meadia	Shooting Star	dry	2.00
Echinacea pallida	Pale Purple Coneflower	dry	12.00
Elymus canadensis	Canada Wild Rye	dry+mesic	14.00
Equisetum hymale		dry+mesic	trace
Eragrostis alba	Purple Love Grass	dry	trace
Eryngium yuccafolium	Rattlesnake Master	dry+mesic	1.00

<i>Eupatorium altissimum</i>	Tall Boneset	dry+mesic	3.00
<i>Euphorbia corollata</i>	Flowering Spurge	dry+mesic	1.00
<i>Gaura biennis</i>	Biennial Gaura	dry	trace
<i>Gentiana puberulenta</i>	Prairie Gentian	dry	trace
<i>Gnaphalium obtusifolium</i>	Sweet Everlasting	dry	0.50
<i>Helianthemum canadense</i>	Frost Weed	dry	0.30
<i>Helianthus occidentalis</i>	Western Sunflower	dry	4.00
<i>Helianthus rigidus</i>	Stiff Sunflower	dry+mesic	2.00
<i>Heliopsis helianthoides</i>	False Sunflower	dry+mesic	0.50
<i>Heuchera richardsonii</i>	Alum Root	dry	trace
<i>Hieraceum longipilum</i>	Hairy Hawkweed	dry	trace
<i>Hypericum punctatum</i>	Spotted St. John's Wort	dry	trace
<i>Hypericum sphaerocarpum</i>	Round St. John's Wort	dry	0.50
<i>Juncus interior</i>	Inland Rush	dry	2.25
<i>Juncus tenuis</i>	Path Rush	dry	trace
<i>Kohleria cristata</i>	June Grass	dry	3.20
<i>Kuhnia eupatorioides</i>	False Boneset	dry	3.00
<i>Lechea stricta</i>	Bushy Pinweed	dry	1.30
<i>Lechea tenuifolia</i>	Narrow Leaf Pinweed	dry	1.70
<i>Lechea villosa</i>	Hairy Pinweed	dry	1.30
<i>Lespedeza capitata</i>	Round -headed Bush Clover	dry+mesic	5.00
<i>Liatris aspera</i>	Rough Blazing Star	dry+mesic	8.00
<i>Linum sulcatum</i>	Groved Yellow Flax	dry	trace
<i>Lithospermum incisum</i>	Fringed Puccoon	dry	trace
<i>Lysimachia quadrifolia</i>	Whorled Loosestrife	dry	trace
<i>Monarda fistulosa</i>	Wild Bergamot	dry+mesic	2.50
<i>Monarda punctata</i>	Dotted Bergamot	dry	1.30
<i>Oenothera biennis</i>	Evening Primrose	dry	trace
<i>Oenothera rhombipetala</i>	Sand Evening Primrose	dry	trace
<i>Onosmodium hispidissimum</i>	Marbleseed	dry	trace
<i>Oxalis violacea</i>	Violet Wood Sorrel	dry	trace
<i>Panicum oligosanthos</i> var <i>scrib.</i>	Scribner's Panic Grass	dry+mesic	5.40
<i>Panicum vilosissimum</i>	White Haired Panic Grass	dry	trace
<i>Panicum virgatum</i>	Switch Grass (dry)	dry	trace
<i>Panicum virgatum</i>	Switch Grass (mesic)	mesic	trace
<i>Parthenium integrifolium</i>	Wild Quinine	dry+mesic	8.70
<i>Pedicularis canadensis</i>	Wood Betony	dry+mesic	trace
<i>Penstemon digitalis</i>	Foxglove Penstemon	dry+mesic	5.00
<i>Penstemon hirsuta</i>	Hairy Penstemon	dry	0.70
<i>Polygala incarnata</i>	Pink Milkwort	dry	trace
<i>Polygala polygama</i>	Purple Milkwort	dry	trace
<i>Polygala sanguinea</i>	Field Milkwort	dry	trace
<i>Potentilla arguta</i>	Prairie Cinquefoil	dry+mesic	10.50
<i>Prunus americanus</i>	American Plum	dry	1.00
<i>Ptelea trifoliata</i>	Wafer Ash	dry	1.70
<i>Pycnanthemum tenuifolium</i>	Narrow Leaf Mountain Mint	dry	7.25
<i>Ratibida pinnata</i>	Yellow Coneflower	dry	3.30
<i>Rosa carolina</i>	Pasture Rose	dry	1.30
<i>Rudbeckia hirta</i>	Black-eyed Susan	dry+mesic	trace
<i>Rudbeckia subtomentosa</i>	Sweet Black-eyed Susan	dry+mesic	0.40
<i>Ruellia humilis</i>	Wild Petunia	dry	trace


<i>Scleria triglomerata</i>	Tall Nut Rush	dry	trace
<i>Senecio pauperculus</i>	Balsam Ragwort	dry	trace
<i>Silene antirrhina</i>	Sleepy Catchfly	dry	trace
<i>Silphium integrifolium</i>	Rosinweed	dry+mesic	2.00
<i>Silphium laciniatum</i>	Compass Plant	dry	5.00
<i>Sisyrinchium albidum</i>	Blue-eyed Grass	dry	trace
<i>Solidago gymnospermoides</i>	Grass-leaved Goldenrod	dry	8.00
<i>Solidago juncea</i>	Early Goldenrod	dry	trace
<i>Solidago missouriensis</i>	Missouri Goldenrod	dry	13.75
<i>Solidago nemoralis</i>	Gray Goldenrod	dry	5.50
<i>Solidago rigida</i>	Stiff Goldenrod	dry	trace
<i>Solidago speciosa</i>	Showy Goldenrod	dry	2.50
<i>Sorghastrum nutans</i>	Indian Grass	dry	11.00
<i>Specularia perfoliata</i>	Venus Looking Glass	dry	trace
<i>Sporobolus heterolepis</i>	Dropseed Grass	dry	trace
<i>Stipa spartea</i>	Porcupine Grass	dry	1.30
<i>Tephrosia virginiana</i>	Goat's Rue	dry	0.50
<i>Tradescantia ohiensis</i>	Common Spiderwort	dry+mesic	6.25
<i>Verbena stricta</i>	Hoary Vervain	dry	1.30
<i>Viola fimbriatula</i>	Sand Violet	dry	trace
<i>Viola pedata</i>	Bird's Foot Violet	dry	trace
<i>Zizia aptera</i>	Heart Leaved Alexanders	dry	trace
			<b>261.40</b>

11/24/07

ALL SEED FOR FCNA Planting #'s: 73 & 74  
2007 Seed Contract + NC and Mike Crowe  
Totals

DRY MIX 17.65 lbs milled

Wet seeds 4.35  
Will ~~not~~ plant some other place. No wet habitat.

porcupine grass ✓  Head planted in N. 10-Lane .30

DRY-MESIC mix 53.07

MIXED SEEDS FROM GREEN BARRELS

and racks - milled 11/21/07 28.30

subtotal 103.67

1 green barrel beach wormwood 10.00  
picked 11/23

2 green barrels mixed seed 7.3 + 4.7 = 12.00  
(mainly bush clover and Ech, pal.)

picked 11/24/07

total 125.67

species in mixes and not individually weighed:

stiff goldenrod

coluers root

showy goldenrod

prairie lyssoy

thimbleweed

prairie gentian

gray goldenrod

grass leaf goldenrod

11/23/07

Dry mix

2007 seed contract TNC

and mike crowe

For FCNA

milled lbs weight

Species:

Ech. pallida		7.9
Quinine		2.15
? Liatris pyc. (likely L. aspera)		.50
Sidaots gramma		.15
Coreopsis (lance-leaved)		.15
Leadplant		.30
rough drop seed		.55
purple prairie clover		1.90
goats rue		.95
whorled milkweed		2.50
white prairie clover		.60
western sun flower		.10
NORTHERN DROPSEED		.65
June grass		.75
beach wormwood		4.65

total 23.80

barely mix wght. 17.65

use this one

Wet seeds:

Giant St. Johnswort		1.10
mix: Solomon seal	1.75	} 3.25
mountain mint	1.00	
carriion flower	.50	

Total 4.35

Stipa spartea

.30

DRY MIX

11/23/07

2007 Seed Contract TWC and Mike Crowe

Dry-mesic mix (These are species  
that were collected individually and weighed)

Species	weight lbs
blue vervain	.55
horsemint	.15
Junegrass	.80
false boneset	.15
rattlesnake master	3.35
mountain mint	.10
white indigo	15.02
tall coreopsis	1.6
spiderwort	1.5
bush clover	12.3
Carex sp. (likely <i>C. brucknellii</i> or some <i>C. muhlenbergii</i> )	.3
beach wormwood	4.65
white hairy panic grass	.05
penstemon dig.	3.80
wild coffee	.30
<i>Liatris aspera</i>	.05
prairie cinquefoil	1.3
wingstem	.25
hoary vervain	.95
milk vetch	.15
rush	.25
indian hemp	2.50
compass plant	.90
prairie dock	.50
rosin weed	
	<u>2.10</u>
individually picked - bagged	total 53.07
picked in mix in big green barrels	28.30
	<u>81.37</u>

✓ sent  
4/24/07

**INVOICE for Payment following Completion of Contract**

Contract Number: #C08-04-NGP-P  
Contract purpose: Harvest native seeds for over seeding two 10-acre Franklin Creek  
Natural Area plantings.  
Cost Center Name: Nachusa Stewardship  
Cost Center Number: 113648001

See below  
\*  
\*

I have met all my contract obligations, including meeting the required diversity of  
species, harvesting a sufficient weight of seed, and submitting a final report of seeds  
harvested.

✓ all worked out.  
-Bui Klein  
TNC

Amount to be paid: \$1,500

Please mail the check to the following address:

Mike Crowe  
POB 73  
Lindenwood, IL 61049

Thank you very much,

*Mike Crowe*

Mike Crowe

* Center Name	<del>NACHUSA STEW</del> FWS SWG NACHUSA STEWARDS
Center Number	1131643803
Account Number	
Goods/Services Descr.	
Business Purpose	Plant native seed
Contract Number	
Payment Number	
Approval Signature	<i>Bui Klein</i>

\* Would rather pay this off the center. 1131643803  
as this works for fits this new center better.

-Bui Klein



Date 8-7-08  
Planting Name- Naylor Rd South  
Planting Number- 73  
Where is the Planting – FCNA  
Acres- 10  
Recorders' Names- Mike Saxon, Michael Miller  
Hours Spent- 1

The South planting is on its third growing season. It has a nice rise on the south side of the planting which has dryer plant species than the rest of the planting. The planting has nice diversity; we saw hoary vervain, Canada milk vetch, and purple prairie clover to name a few. The major weed issue for this planting is Canada thistle in the center of the planting and the border between planting #73 and #74. We also did extensive brush clearing from the border fences around the entire 20 acre DNR planting.

Date 8-7-08  
Planting Name- Naylor Rd North  
Planting Number- 74  
Where is the Planting – FCNA  
Acres- 10  
Recorders' Names- Mike Saxon, Michael Miller  
Hours Spent- 1

The Planting looked great for being on its second growing season. We saw seven blazing stars and the rest of the planting looked very diverse. There are few invasive weeds, but there are still lingering agriculture weeds. The weeds to look out for are Queen Ann's lace on the sides of the plantings and a lot of Canada thistle mixed through out the planting. There were some parsnip, fifty plants, earlier in the year spread through out the planting we spaded them out. There is a strip we will over seed that we missed last time on the west side of the planting. Earlier in the season we mowed the western boundary for parsnip. We also did extensive brush clearing from the border fences around the entire 20 acre DNR planting.

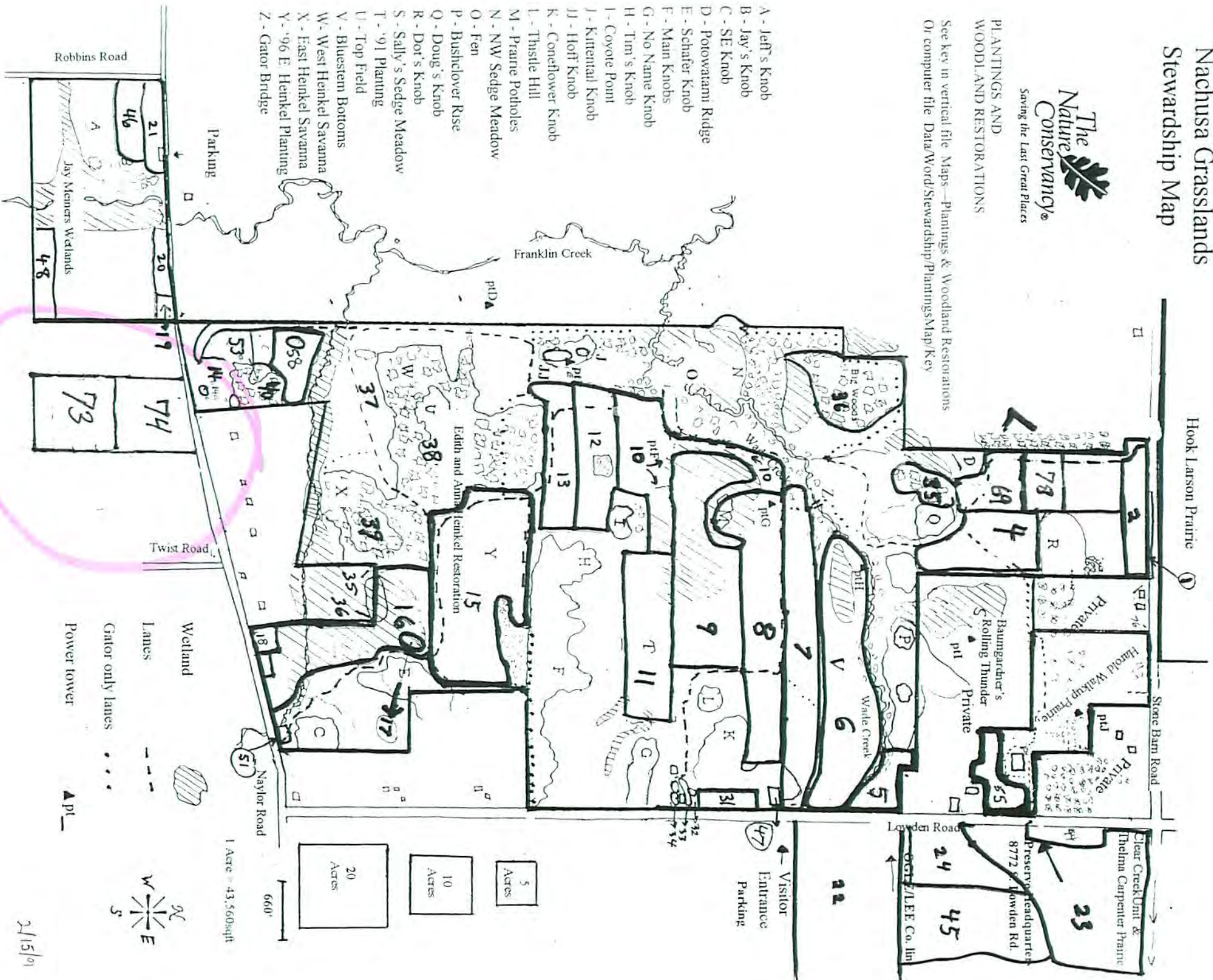
# Nachusa Grasslands Stewardship Map



PLANTINGS AND WOODLAND RESTORATIONS

See key in vertical file Maps—Plantings & Woodland Restorations  
Or computer file Data/Word/Stewardship/PlantingsMap/Key

- A - Left's Knob
- B - Jay's Knob
- C - SE Knob
- D - Potowami Ridge
- E - Schafer Knob
- F - Mann Knobs
- G - No Name Knob
- H - Tim's Knob
- I - Coyote Point
- J - Kintental Knob
- JJ - Hoff Knob
- K - Coneflower Knob
- L - Thistle Hill
- M - Prairie Potholes
- N - NW Sedge Meadow
- O - Fen
- P - Bushclover Rise
- Q - Doug's Knob
- R - Dot's Knob
- S - Sally's Sedge Meadow
- T - '91 Planting
- U - Top Field
- V - Bluestem Bottoms
- W - West Henkel Savanna
- X - East Henkel Savanna
- Y - '96 E Henkel Planting
- Z - Gator Bridge



- Wetland
- Lanes
- Gator only lanes
- Power tower



1 Acre = 43,560sqft



2/15/01

PLANTING INVENTORY

6

Date 8-7-08

Planting Name Naylor Rd North Planting Number 74

Where is the planting? FCNA

Approximate # acres 10

Recorders' names Mike [unclear] Michael Miller

Hours spent in the field recording 1

Later: Person who entered the data in the computer \_\_\_\_\_

Few means you during the inventory you walked by 1 to 5 plants. "Common" checked means you walked past 6 to 24 plants. Abundant means you walked past 25 to 50 plants. Super abundant means you walked past 50 plants and often thousands of plants.

Species Name (scientific name best)	Few 1-5	Com- mon 6-24	Abun- dant 25-50	Super Abund. 51 ++	Comments (in bag, color, hairs...)
Nodding wild onion				✓	
yellow cone flower				✓	
<i>menarda fistulosa</i>				✓	
Hoary Vervain				✓	
Canada Rye				✓	
<del>Indian Plantain false bane seed</del>			✓		
Daisy fleebane				✓	
penstemon Digitalis		✓			
Quinine PACINT			✓		
prairie cinerifil		✓			
sidew spider wort	✓				
Stiff Goldenrod SOL RIG				✓	
B.F.S Rudibeckia hirta				✓	
pale purple C.F. PER PUR				✓	
Tall coreopsis CON TR		✓			
Rosin weed	✓				
w. <i>menarda punctata</i>		✓			

Planting Name or area Naylor Rd North Planting Number 74 Date 8-7-08  
 FCNA

Species Name (scientific name best)	Few Saw 1-5	Common 6-24	Abundant 25-50	Super Abund 51++	Comments
June Grass				✓	
Anemone cylindrica		✓			
grassleaf Goldenrod				✓	
Canada milkvetch			✓		
Compass plant	✓				
Beech wormwood				✓	
mountain mint			✓		
Blazing star LIA ASP		✓			
Western sunflower			✓		
Shawny Goldenrod		✓			
Big Blue stem				✓	
Dilky Aster		✓			
ILL Ticktrefoil	✓				
early figwort	✓				
Dilky eye			✓		
Rattle snake MASTER ERY YUC		✓			
common milkweed	✓				
false sunflower		✓			
Evening primrose	✓				
Cat hair	✓				
Helianthus Rigidus					
Sand primrose					
Guata Bianca					
Stick seed					
True Boneset					

Queen Ann Burdock spoto beard  
 Yarrow wild lettuce  
 Canthistle ragweed mullein



	1-5	6-24	25-50	50+
Curly Dock				
Mares Tail				
Popple grass				
Old field grass				
Salicaria canadensis				
Hairy Aster				
Indian plantain				✓