

Planting 19 – East Heinkel Planting/East Heinkel Unit – Spring 1995

(written up winter 1999-2000)

This large field was disked and then planted both by hand and by driving around with the pickup truck. Then the field was raked by pulling the harrow behind the pick up truck or John Deere Gator. The field was so large that some areas were skipped in the harrowing. There are strips of little bluestem and strips with no grass and this may be because of planting patterns or harrowing patterns. The planting was mowed two or three times during the summer of 1995. There was lots of little bluestem appearing by Fall 1995.

The field has been burned in Fall 1996, Spring 1998, Spring 1999, Spring 2001.

More forb seed was added in 1996, especially legumes in the highest elevation.

The field is doing well in places, with much diversity, but the diversity is spotty. There are patches of Canada thistle and pasture thistle and non-native grass. We found the occasional birds foot trefoil in 1998. These weeds have been mowed (Canada thistle) and herbicided (trefoil, Canada thistle, etc.) over the years at the time of this writing (1997-1999).

It burns well.

2000 and 2001 we went through the planting and cut parsnip and a few other weeds, but it looks good, still need to add diversity to some spots. Mike Crowe, steward is working on collecting seed for this, such as spiderwort.

Planting #19 Done on 3/27/2015
2015 Planting History
East Heinkel Planting Overseed
Prepared By Jocelyn Frazelle 03/27/2015

38.3 Acres
Dry/Mesic

Location: GPS- 41' 52" 32° N, 89' 21" 03° W. Lee County.

Topography: This area has a ridge line almost to the north line, south of that ridge the land drops at a slope of 5-10% with the southeast corner being the lowest and flattest area. The elevation ranged from 723-770 ft.

Soil Types:

Map Unit Symbol	Map Unit Name	Acres in AOI	Percent of AOI
290C2	Warsaw loam, 5 to 10 percent slopes, eroded	3.0	7.9%
440A	Jasper loam, 0 to 2 percent slopes	8.6	22.3%
440C2	Jasper loam, 5 to 10 percent slopes, eroded	26.7	69.7%
Totals for Area of Interest		38.3	100.0%

<http://websoilsurvey.nrcs.usda.gov/app/WebSoilSurvey.aspx>

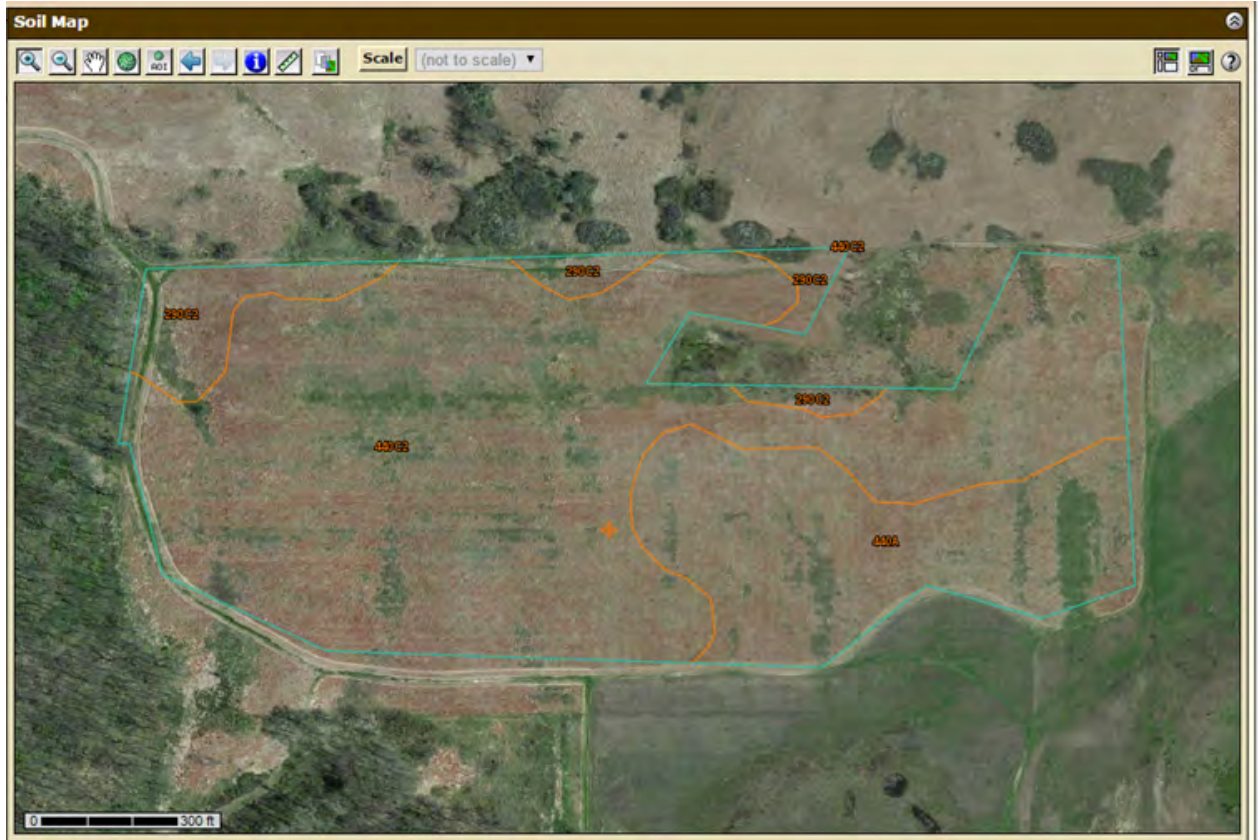
Site Preparations:

This area was burned a week prior to the planting.

Planting the Seed:

The site was planted by Jocelyn Frazelle and Kirk Hallowell using two pick up trucks that each had a pull behind seeder. We planted this area with a seed rate of 10 lbs/acre. We used a mesic seed mix for the area with Jasper loam soil with 0-2% slopes. The rest was seeded with a dry mix. The seed mixes were made with the seed that the seasonal crew collected last year that got categorized into wet, mesic, savanna, and dry mixes based on the book Plants of the Chicago Region by Swink and Wilhelm.

Weather: This planting was started and finished the morning of 3/27/2015. It was sunny with temperature around 29°F.



<http://websoilsurvey.nrcs.usda.gov/app/WebSoilSurvey.aspx>