

Title and Number of Planting: Dot & Doug Wade Prairie 2010 Planting #95

Authors of this History: Al and Mary Meier

Revision Date: 04/05/2016

Site Conditions:

Location: Ogle County, Taylor Township 22N, Range 10E, Section 16. This planting is approximately 6.63 acres in size. The planting is rectangular in shape, except for a small area in the northeastern corner, which follows the southern border of a large fallow area. The coordinates of the boundary corners are:

Southwest corner: N 41°53'33.8", W 089°21'20.1'

Northwest corner: N 41°53'38.6", W 089°21'20.1'

Northeast corner: N 41°53'38.8", W 089°21'12.4'

Southeast corner: N 41°53'33.7", W 089°21'12.4'

The site is bordered by Dot's Knob on the southeast, the Dot & Doug Wade Prairie 2007 Planting #77 on the south, a heavily wooded area on the west (off preserve), and cornfields (future restorations) on the north and northeast. The average elevation of the planting is approximately 760 feet above sea level.

Soil Types: According to the Ogle County Soil Study, soils include

Southwestern quarter of the planting: #779B Chelsea loamy sand, 1 to 7 percent slopes – gently sloping excessively drained soil on low, hummocky dunes on broad stream terraces and uplands.

Remainder of the planting: #727B Waukee loam, 1 to 5 percent slopes – gently sloping, well drained soils on uplands and slightly elevated terraces along streams.

Topographic Features: There are two large fallow areas, which can be easily seen on the map of the planting. The northeastern boundary of the planting was drawn to exclude one of the fallow areas, which will be subsequently referred to as Fallow Area 1. The second fallow area, Fallow Area 2, is included within the planting in the middle of the eastern boundary. Fallow Area 2 measures approximately one-fifth of an acre.

A drainage flows out of Fallow Area 2 to the southwest, and a second drainage flows from the north central part of the planting towards the south. These two drainages converge in the south central part of the planting, and then continue south into planting #78. The farmer had a difficult time getting corn to grow in these two drainages, and in planting #78 the drainage site has been somewhat of a problem area, with several undesirable species such as Poison Hemlock and Canada Goldenrod being commonly found.

The southwestern quadrant of the planting is dominated by a ridge of extremely sandy soil. This ridge extends south into planting #78, where it diminishes.

Site History:

This planting probably had been in row crop production from at least 1939 until 1994. The 1939 aerial photo is a little dark over this area, but it appears to already be in row crops. The 1958 aerial clearly shows that the planting was in row crops at that time and continuously until 1994, when Bill Kleiman, Kevin Kaltenbach, and a few other stewards spread combine mix, not hand-collected mix, over the entire field that includes this planting. The mix contained mostly little bluestem. They did not plant enough seed, nor did they cover the planting evenly. They had expected to add more seed, but ran out. This planting did poorly, filling in with cool season grasses, some native prairie plants, and a lot of *Rubus*, invasive honeysuckle, and box elder seedlings from the fence line to the west.

Bill soon wanted to put the site back in corn, but Gene St. Louis, the unit's steward, decided to over-seed it instead. The field languished for a decade. It was mowed once or twice a year to knock down the woody plants. Gene over-seeded a good mix of species, but there was no apparent improvement. After several years of over-seeding, Bill had a farmer spray the area in the fall with a mix of Crossbow and Roundup. Then the farmer plowed it and planted corn in the spring. The corn was in this planting for seven years.

Site Preparations:

The 2010 corn crop was harvested in late September. A few days later, Al Meier and Bernie Buchholz staked out the planting. Although the plan was to plant only six acres, the area was enlarged slightly in order to bring the northern edge of the planting right up to the southern edge of Fallow Area 1 (see Topographic Features). We did this because the farmer who is planting row crops on the unrestored portions of the unit would not want to plant the small strip on the southern end of Fallow Area 1.

In early October, Al Meier sprayed Roundup on most of the 1/5 acre Fallow Area 2 (see Topographic Features), in an effort to kill the cool season grasses, woody vegetation, and goldenrod growing there. On November 7, Al and Mary Meier used the clearing saw to cut the woody vegetation in this same area down to ground level and treated the cut stumps with a 30% Roundup solution. On November 9, the planting was burned by the crew, Bernie Buchholz and Al, without having been mowed first. The burn was mostly complete over the planting. On November 13, Mary and Al finished removing the woody vegetation as well as large hunks of concrete waste from the Fallow Area 2, and they also planned how the seeding would take place. The following week, Cody Considine arranged to have the large drainage ditch along the eastern edge of the planting extending north towards Stone Barn Road pushed in and smoothed to the level of the surrounding corn fields.

Seed Planting:

About 400 pounds of seed were mixed in the Morton building on November 13 by Al and Mary, assisted by seven volunteers from local colleges. Seed planting began on November 16. The majority of the seed was planted using a pendulum seed broadcaster attached to a small Kubota tractor, which pulled a harrow behind. Two full passes of the planting were made, first at a setting of 18 and then 12 for the second pass. The General seed mix was used on those two passes. Also, additional passes up and down the two drainages were made to ensure adequate coverage of these potentially difficult areas. Fallow Area 2 was also planted with the General mix, but it was done separately and at a much higher seed rate than the rest of the planting. The Dry mix was also spread using the Kubota tractor. The Dry mix was spread only on the extremely sandy southwestern quarter of the planting and the southeastern edge of the planting closest to Dot's Knob.

On November 21, Al and Mary continued with the planting efforts by hand sowing several species. The Mesic mix was planted in the two drainages and Fallow Area 2. Most of the dry handplant seeds, including the majority of the porcupine grass, were planted in the sandy ridge in the southwest corner of the planting. A Lead Plant/Thimbleweed was foot-smear throughout most of the planting.

On that same day, Mary spread an additional 6.6 pounds of Little Bluestem (not included in the planting inventory) between the planting boundary and the two-track adjacent to the southeast edge of the planting. This is an area that has had a lot of weedy goldenrods in the past, and had been burned at the same time that the cornfield was burned.

Seed List:

Approximately 426 pounds of seed (including chaff and stems) were planted. A total of 134 species were included. Most of the seed was hand-harvested by Alan and Mary Meier, all of it in 2010. The Little Bluestem and the Dropseed were provided by the crew. The bulk seed per acre average was 67.6 pounds.

The 6.6 pounds of Little Bluestem that was planted along the southeastern edge of the planting is not included in that total.

Scientific Name	Common Name	Total lbs	Mix
<i>Allium cernuum</i>	Nodding Wild Onion	4.85	G
<i>Amelanchier leavis</i>	Allegheny Shadblow	0.01	dry handplant
<i>Amorpha canescens</i>	Lead Plant	10.90	D
<i>Amorpha fruticosa</i>	Indigo Bush	0.40	G
<i>Andropogon (Schizachyrium) scoparium</i>	Little Bluestem	30.25	G
<i>Anemone canadensis</i>	Meadow Anemone	0.05	M
<i>Anemone cylindrica</i>	Thimbleweed	1.70	G-1.45, D-.25
<i>Antennaria neglecta</i>	Field Cat's Foot	0.15	D
<i>Antennaria plantaginifolia</i>	Pussy Toes	1.00	G
<i>Apocynum androsaemifolium</i>	Spreading Dogbane	0.10	G
<i>Aristida purpurascens</i>	Arrow Feather (three-awn grass)	0.55	D

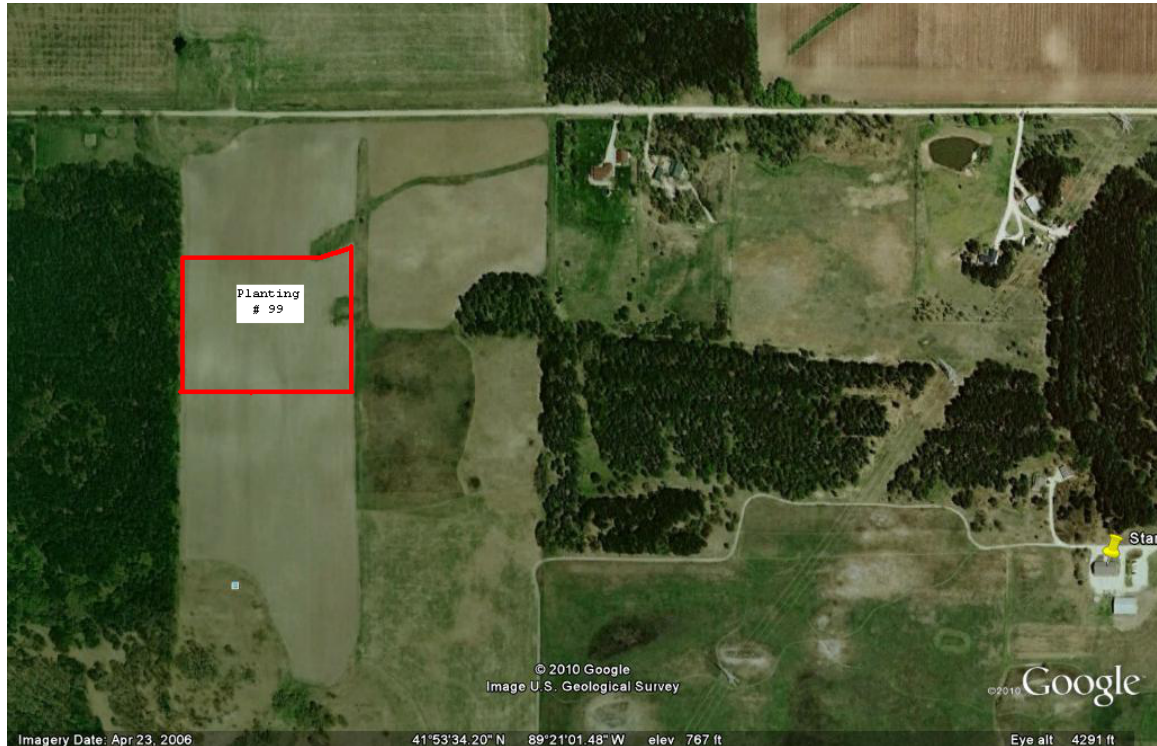
<i>Artemisia caudata (campestris)</i>	Beech Wormwood	0.40	G
<i>Asclepias amplexicaulis</i>	Sand Milkweed	0.01	dry handplant
<i>Asclepias verticillata</i>	Whorled milkweed	0.35	G
<i>Aster azureus (oolentangiensis)</i>	Sky-blue Aster	7.20	G
<i>Aster ericoides</i>	Heath Aster	5.80	G
<i>Aster laevis</i>	Smooth Aster	2.80	G
<i>Aster linariifolius</i>	Stiff Aster	2.55	D
<i>Aster novae-angliae</i>	New England Aster	0.60	M
<i>Aster oblongifolius</i>	Aromatic Aster	0.15	D
<i>Aster ptarmicoides</i>	White Aster	0.05	dry handplant
<i>Aster sericeus</i>	Silky Aster	3.20	G
<i>Astragalus canadensis</i>	Canada Milk Vetch	3.50	G
<i>Baptisia leucantha</i>	White Wild Indigo	31.20	G
<i>Baptisia leucophaea</i>	Cream Wild Indigo	13.75	G
<i>Bouteloua curtipendula</i>	Side Oats Gramma	2.55	G
<i>Bouteloua hirsuta</i>	Moustache Grass (Hairy Grama)	0.01	dry handplant
<i>Cacalia atriplicifolia</i>	Pale Indian Plantain	2.25	G
<i>Carex bicknellii</i>	Bicknell's Sedge	0.15	G
<i>Carex bicknellii, muehlenbergii, & mesic sedges</i>	Sedge Mix	1.80	G
<i>Cassia fasciculata</i>	Partridge Pea	0.30	G
<i>Castilleja sessiliflora</i>	Downy Yellow Painted Cup	0.05	dry handplant
<i>Chrysopsis camporum (Heterotheca)</i>	Golden Prairie Aster	0.05	D
<i>Cirsium hillii</i>	Hill's Thistle	0.01	dry handplant
<i>Coreopsis lanceolata</i>	Sand Coreopsis	0.05	D
<i>Coreopsis palmata</i>	Prairie Coreopsis	5.30	G
<i>Coreopsis tripteris</i>	Tall Coreopsis	0.95	G-.60, M-.35
<i>Corylus americana</i>	American Hazelnut	0.20	handplant
<i>Cyperus filiculmis</i>	Slender Sand Sedge	0.01	D
<i>Danthonia spicata</i>	Poverty Oat Grass	0.40	D
<i>Desmanthus illinoense</i>	Ill. Bundleflower (Sensitive Plant)	0.15	G
<i>Desmodium illinoense</i>	Illinois Tick Trefoil	1.35	G
<i>Dodecantheon meadia</i>	Shooting Star	4.25	G
<i>Echinacea pallida</i>	Pale Purple Coneflower	60.55	G
<i>Echinocystis lobata</i>	Wild Cucumber	0.05	G
<i>Elymus canadensis</i>	Canada Wild Rye	8.90	G
<i>Eragrostis spectabilis</i>	Purple Love Grass	0.25	G
<i>Eryngium yuccifolium</i>	Rattlesnake Master	5.45	G-2.80, M-2.65
<i>Eupatorium altissimum</i>	Tall Boneset	0.40	G
<i>Eupatorium perfoliatum</i>	Boneset	0.45	M
<i>Euphorbia corollata</i>	Flowering Spurge	5.40	G
<i>Gaura biennis pitcheri (longiflora)</i>	Common Gaura	0.10	G
<i>Gentiana (alba) flavida</i>	Cream Gentian	0.50	G
<i>Gentiana puberulenta</i>	Prairie Gentian	0.15	G
<i>Geum triflorum</i>	Prairie Smoke	0.01	dry handplant
<i>Helianthemum canadense</i>	Common Rockrose (Frostweed)	0.60	G-.5,D-.1
<i>Helianthus occidentalis</i>	Western Sunflower	2.50	G
<i>Helianthus rigidus (laetiflorus)</i>	Prairie Sunflower	0.05	G

<i>Heliopsis helianthoides</i>	False Sunflower	1.80	G-1.55, M-.25
<i>Heuchera richardsonii grayana</i>	Alum Root	0.20	G-.15, D-.05
<i>Hieracium longipilum</i>	Hairy Hawkweed	0.25	D
<i>Houstonia (Hedyotis) longifolia (canadense)</i>	Long-Leaved Bluets	0.25	D
<i>Hypericum pyramidatum</i>	Great St. Johnswort	0.05	wet handplant
<i>Hypoxis hirsuta</i>	Yellow Star Grass	0.01	D
<i>Juncus interior</i>	Inland Rush	1.75	G
<i>Koeleria cristata (macrantha)</i>	Prairie June Grass	4.10	G
<i>Kuhnia (Brickellia) eupatorioides</i>	False Boneset	3.70	G
<i>Lechea stricta</i>	Bushy Pinweed	0.60	G-.55,D-.05
<i>Lechea tenuifolia</i>	Slender-Leaved Pinweed	0.50	G
<i>Lechea villosa (mucronata)</i>	Hairy Pinweed	1.60	G
<i>Lespedeza capitata</i>	Round-Headed Bush Clover	5.90	G
<i>Liatris aspera</i>	Rough Blazing Star	34.00	G
<i>Liatris cylindracea</i>	Dwarf Blazingstar	0.05	dry handplant
<i>Liatris pycnostachya</i>	Prairie Blazing Star, Tall Gayfeather	6.00	G
<i>Linum sulcatum</i>	Grooved Yellow Flax	0.01	dry handplant
<i>Lithospermum canescens</i>	Hoary Puccoon	0.01	dry handplant
<i>Lithospermum incisum</i>	Fringed Puccoon	0.01	dry handplant
<i>Lobelia spicata</i>	Pale-spiked Lobelia	0.01	D
<i>Lupinus perennis</i>	Wild Lupine	0.65	D
<i>Monarda fistulosa</i>	Wild Bergamot	0.80	G-.55, .25 M
<i>Monarda punctata villicualis</i>	Horse Mint	0.15	G
<i>Napaea dioica</i>	Glade Mallow	0.30	M
<i>Oenothera clelandii (rhombipetala)</i>	Sand Evening Primrose	0.05	D
<i>Oxalis violacea</i>	Violet Wood Sorrel	0.05	D
<i>Panicum leibergii</i>	Prairie Panic Grass	0.05	D
<i>Panicum oligosanthos</i>	Scribner's Panic Grass	0.15	D
<i>Panicum villosissimum</i>	White-Haired Panic Grass	0.25	D
<i>Parthenium integrifolium</i>	Wild Quinine	18.10	G
<i>Paspalum ciliatifolium muhlenbergii</i>	Hairy Lens Grass	0.05	dry handplant
<i>Penstemon digitalis</i>	Foxglove Beard Tongue	1.15	G
<i>Petalostemum (Dalea) candidum</i>	White Prairie Clover	1.25	D
<i>Petalostemum (Dalea) purpurea</i>	Purple Prairie Clover	25.10	G-9.55, D-15.65
<i>Polygala polygama obtusata</i>	Purple Milkwort	0.05	dry handplant
<i>Polygala sanguinea</i>	Field Milkwort	0.01	dry handplant
<i>Polytaenia nuttallii</i>	Prairie Parsley	0.01	G
<i>Potentilla arguta</i>	Prairie Tall Cinquefoil	5.50	G
<i>Prenanthes aspera</i>	Rough White Lettuce	0.05	dry handplant
<i>Pseudognaphalium obtusifolium</i>	Sweet Everlasting	0.35	G
<i>Pycnanthemum tenuifolium</i>	Slender Mountain Mint	3.90	G-2.85, M-1.05
<i>Ratibida pinnata</i>	Yellow Coneflower	0.10	M
<i>Rhus aromatica</i>	Sweet Sumac	0.05	G
<i>Rosa carolina</i>	Pasture Rose	0.75	G
<i>Rudbeckia hirta</i>	Black-Eyed Susan	0.95	G
<i>Rudbeckia subtomentosa</i>	Sweet Black-Eyed Susan	1.60	M
<i>Scrophularia lanceolata</i>	Early Figwort	0.30	G

<i>Senecio pauperculus</i>	Balsom Ragwort	0.70	G
<i>Silene stellata</i>	Starry Campion	0.01	G
<i>Silphium integrifolium</i>	Rosin Weed	6.40	G
<i>Silphium laciniatum</i>	Compass Plant	10.65	G
<i>Silphium perfoliatum</i>	Cup Plant	2.20	M
<i>Silphium terebinthinaceum</i>	Prairie Dock	0.95	G
<i>Sisyrinchium albidum</i>	Common Blue-Eyed Grass	0.05	D
<i>Solidago (Euthamia) graminifolia</i>	Viscid Bushy Goldenrod	2.85	M
<i>Solidago grammifolia</i>	Grass-Leaved Goldenrod	4.20	G
<i>Solidago missouriensis</i>	Missouri Goldenrod	0.75	G
<i>Solidago nemoralis</i>	Old Field Goldenrod	5.75	G
<i>Solidago speciosa</i>	Showy Goldenrod	5.00	G
<i>Sporobolus heterolepis</i>	Prairie Dropseed	3.50	G-2, 1.5 handplant
<i>Stipa spartea</i>	Porcupine Grass	0.15	H
<i>Talinum rugospermum</i>	Sand Fameflower	0.01	dry handplant
<i>Tephrosia virginiana</i>	Goat's Rue	11.20	G
<i>Teucrium canadense</i>	American Germander (Wood Sage)	0.45	G
<i>Thalictrum dasycarpum</i>	Purple Meadow Rue	0.25	G
<i>Tradescantia ohioensis</i>	Common Spiderwort	6.00	G
<i>Triosteum aurantiacum</i>	Orange-Fruited Horse Gentian (Wild Coffee)	3.60	G
<i>Verbena hastata</i>	Blue Vervain	1.40	M
<i>Verbena stricta</i>	Hoary Vervain	4.55	G
<i>Verbena urticifolia</i>	White Vervain	1.60	G
<i>Veronicastrum virginicum</i>	Culver's Root	3.00	M
<i>Viola pedata</i>	Birdsfoot Violet	0.10	D
<i>Viola pedatifida</i>	Prairie Violet	0.05	D
<i>Viola sagittata</i>	Arrow-Leaved Violet	0.05	D
<i>Zizia aptera</i>	Heart-Leaved Meadow Parsnip	0.05	G
<i>Zizia aurea</i>	Golden Alexander	1.15	G
	Total seed weight	425.8	
		5	
	Total species count	134	

G=General Mix, D=Dry Mix, M=Mesic Mix

Map:



Lessons Learned:

A couple of years before the restoration of this area, Al Meier removed the woody vegetation from Fallow Area 2, but then didn't do any additional work in this area until October 2010 after the farmer had harvested the corn. For Fallow Area 1, it would be advisable to begin work on this area immediately and to continue efforts to remove non-native species so that it will be ready to be restored at some future point in time.

On our two prior plantings we spent many hours hand-sowing Thimbleweed, Illinois Tick Trefoil, and Whorled Milkweed. By milling these species with other seeds, such as Canada Rye, Leadplant, and asters, we were able to include these species in our seed mixes, thus reducing the total hours required to complete the planting process.

Photos:

Photos by Heather Baker



2011 Follow up notes

The following items were planted in 2011. Some early-season species were planted shortly after they were harvested. The remaining items were planted at the end of the harvest season. All items were carefully hand-planted to ensure contact of the seeds with the soil.

Scientific Name	Common Name	Weight (lbs)	Date Planted	Note
<i>Aristida purpurascens</i>	Arrow Feather (three-awn grass)	0.45	11/19/2011	sandy ridge
<i>Asclepias viridiflora</i>	Short Green Milkweed	0.01	11/27/2011	sandy ridge
<i>Aster linariifolius</i>	Stiff Aster	1.20	11/19/2011	sandy ridge
<i>Aster ptarmicoides</i>	White Aster (Stiff Aster)	0.15	11/27/2011	sandy ridge
<i>Bouteloua curtipendula</i>	Side Oats Gramma	1.00	11/19/2011	sandy ridge
<i>Cirsium hillii</i>	Hill's Thistle	0.05	11/19/2011	sandy ridge
<i>Comandra umbellata</i>	False Toadflax	0.20	11/27/2011	
<i>Danthonia spicata</i>	Poverty Oat Grass	0.30	11/19/2011	sandy ridge
<i>Echinacea pallida</i>	Pale Purple Coneflower	5.30	11/27/2011	east edge of planting
<i>Gentiana puberulenta</i>	Prairie Gentian	0.15	11/27/2011	
<i>Geum triflorum</i>	Prairie Smoke	0.01	6/26/2011	sandy ridge
<i>Hypericum gentianoides</i>	Orange Grass	0.01	11/27/2011	sandy ridge
<i>Isanthus brachiatus</i>	False Pennyroyal	0.01	11/27/2011	sandy ridge
<i>Lechea villosa (mucronata)</i>	Hairy Pinweed	0.30	11/19/2011	sandy western edge
<i>Liatriis cylindracea</i>	Dwarf Blazingstar	0.40	11/19/2011	sandy ridge
<i>Linum sulcatum</i>	Grooved Yellow Flax	0.05	11/27/2011	sandy ridge
<i>Lupinus perennis</i>	Wild Lupine	1.75	6/26/2011	sandy western edge
<i>Panicum villosissimum</i>	White-Haired Panic Grass	0.45	11/19/2011	sandy ridge
<i>Prenanthes aspera</i>	Rough White Lettuce	0.05	11/19/2011	sandy ridge
<i>Sisyrinchium albidum</i>	Common Blue-eyed Grass	0.01	11/27/2011	
<i>Stipa spartea</i>	Porcupine Grass	0.20	6/17/2011	sandy ridge
<i>Wulfenia bullii (Besseyia)</i>	Kittentails	0.01	11/27/2011	sandy ridge
<i>Zizia aptera</i>	Heart-leaved Meadow Parsnip	0.05	11/27/2011	
	Total item weight	12.11		

In September, 2011 twelve plugs of each of the following species were planted in the northeast quadrant of the planting:

- Prairie Violet (*Viola pedatifida*)
- Prairie Smoke (*Geum triflorum*)
- Butterfly Weed (*Asclepias tuberosa interior*)

2012 Follow up notes

The following is a list of the seeds that were planted in November 2012. Most of these seeds were planted in the drainage areas and other areas that were not progressing adequately. The ones listed as “dry” were planted in the sandy ridge in the southeastern quadrant of the planting.

<i>Scientific Name</i>	Common Name	Weight	Note
<i>Allium canadense</i>	Wild Garlic	0.02	
<i>Allium cernuum</i>	Nodding Wild Onion	0.19	
<i>Amorpha canescens</i>	Lead Plant	6.94	
<i>Anemone canadensis</i>	Meadow Anemone	0.02	
<i>Anemone cylindrica</i>	Thimbleweed	0.49	
<i>Antennaria neglecta</i>	Field Cat's Foot	0.13	
<i>Antennaria plantaginifolia</i>	Pussy Toes	0.57	
<i>Apocynum androsaemifolium</i>	Spreading Dogbane	0.06	
<i>Aristida purpurascens</i>	Arrow Feather (three-awn grass)	0.14	
<i>Artemisia caudata (campestris)</i>	Beech Wormwood	0.87	
<i>Asclepias verticillata</i>	Whorled milkweed	0.05	
<i>Aster azureus (oolentangiensis)</i>	Sky-blue Aster	2.18	
<i>Aster ericoides</i>	Heath Aster	3.00	
<i>Aster laevis</i>	Smooth Aster	1.60	
<i>Aster linariifolius</i>	Stiff Aster	0.51	
<i>Aster novae-angliae</i>	New England Aster	0.38	
<i>Aster oblongifolius</i>	Aromatic Aster	0.06	
<i>Aster sericeus</i>	Silky Aster	1.28	
<i>Astragalus canadensis</i>	Canada Milk Vetch	0.66	
<i>Baptisia leucantha</i>	White Wild Indigo	6.59	
<i>Baptisia leucophaea</i>	Cream Wild Indigo	1.07	
<i>Bouteloua curtipendula</i>	Side Oats Gramma	0.08	
<i>Bouteloua hirsuta</i>	Moustache Grass (Hairy Grama)	0.01	dry
<i>Cacalia atriplicifolia</i>	Pale Indian Plantain	0.47	
<i>Carex bicknellii</i>	Bicknell's sedge	0.95	
<i>Carex muehlenbergii</i>	Sand Bracted Sedge (Muhlenberg's)	0.02	
<i>Chrysopsis camporum (Heterotheca)</i>	Golden Prairie Aster	0.14	
<i>Comandra umbellata</i>	False Toadflax	0.03	
<i>Coreopsis palmata</i>	Prairie Coreopsis	2.04	
<i>Coreopsis tripteris</i>	Tall Coreopsis	0.36	
<i>Desmanthus illinoense</i>	Ill. Bundleflower (Sensitive Plant)	0.11	
<i>Desmodium illinoense</i>	Illinois Tick Trefoil	0.01	
<i>Dodecantheon meadia</i>	Shooting Star	0.06	
<i>Echinacea pallida</i>	Pale Purple Coneflower	21.99	
<i>Elymus canadensis</i>	Canada Wild Rye	3.41	

<i>Eragrostis spectabilis</i>	Purple Love Grass	0.03	
<i>Erigeron strigosus</i>	Daisy Fleabane	0.21	
<i>Eryngium yuccifolium</i>	Rattlesnake Master	2.02	
<i>Eupatorium altissimum</i>	Tall Boneset	0.13	
<i>Euphorbia corollata</i>	Flowering Spurge	1.04	
<i>Gaura biennis pitcheri (longiflora)</i>	Common Gaura	0.13	
<i>Gentiana (alba) flavida</i>	Cream Gentian	0.25	
<i>Gentiana puberulenta</i>	Prairie Gentian	0.06	
<i>Helianthemum canadense</i>	Common Rockrose (Frostweed)	0.17	
<i>Helianthus occidentalis</i>	Western Sunflower	1.34	
<i>Helianthus rigidus (laetiflorus)</i>	Prairie Sunflower	0.02	
<i>Heliopsis helianthoides</i>	False Sunflower	0.27	
<i>Heuchera richardsonii grayana</i>	Alum Root	0.06	
<i>Juncus interior</i>	Inland Rush	0.40	
<i>Juncus tenuis</i>	Path Rush	0.05	
<i>Koeleria cristata (macrantha)</i>	Prairie June Grass	0.71	
<i>Krigia biflora</i>	Two-flowered Cynthia (False Dandelion)	0.02	
<i>Kuhnia (Brickellia) eupatorioides</i>	False Boneset	1.50	
<i>Lechea villosa (mucronata)</i>	Hairy Pinweed	0.02	
<i>Lespedeza capitata</i>	Round-headed Bush Clover	3.57	
<i>Liatris aspera</i>	Rough Blazing Star	2.34	
<i>Liatris pycnostachya</i>	Prairie Blazing Star, Tall Gayfeather	0.36	
<i>Lobelia spicata</i>	Pale-spiked Lobelia	0.01	
<i>Lupinus perennis</i>	Wild Lupine	0.41	
<i>Monarda fistulosa</i>	Wild Bergamot	0.32	
<i>Monarda punctata villicualis</i>	Horse Mint	0.09	
<i>Oenothera biennis canescens</i>	Common Evening Primrose	0.06	
<i>Oenothera clelandii (rhombipetala)</i>	Sand Evening Primrose	0.05	
<i>Panicum leibergii</i>	Prairie Panic Grass	0.01	
<i>Panicum oligosanthos</i>	Scribner's Panic Grass	0.71	
<i>Panicum virgatum</i>	Prairie Switch Grass	0.13	
<i>Parthenium integrifolium</i>	Wild Quinine	6.53	
<i>Paspalum ciliatifolium muhlenbergii</i>	Hairy Lens Grass	0.05	
<i>Penstemon digitalis</i>	Foxglove Beard Tongue	0.38	
<i>Penstemon hirsutus</i>	Hairy Beard tongue	0.13	
<i>Petalostemum (Dalea) candidum</i>	White Prairie Clover	1.60	
<i>Petalostemum (Dalea) purpurea</i>	Purple Prairie Clover	4.20	
<i>Polytaenia nuttallii</i>	Prairie Parsley	0.02	
<i>Potentilla arguta</i>	Prairie Tall Cinquefoil	0.95	
<i>Pseudognaphalium obtusifolium</i>	Sweet Everlasting	0.13	
<i>Pycnanthemum tenuifolium</i>	Slender Mountain Mint	1.23	
<i>Pycnanthemum virginianum</i>	Mountain mint (Prairie Hyssop)	0.93	
<i>Ratibida pinnata</i>	Yellow Coneflower	0.05	
<i>Rosa carolina</i>	Pasture Rose	0.73	
<i>Rudbeckia hirta</i>	Black-eyed Susan	0.32	

<i>Rudbeckia subtomentosa</i>	Sweet Black Eyed Susan	0.52	
<i>Scutellaria parvula leonardi</i>	Small skullcap	0.01	
<i>Senecio pauperculus</i>	Balsom Ragwort	0.17	
<i>Silphium integrifolium</i>	Rosin Weed	1.04	
<i>Silphium laciniatum</i>	Compass Plant	4.04	
<i>Silphium perfoliatum</i>	Cup Plant	0.19	
<i>Silphium terebinthinaceum</i>	Prairie Dock	0.47	
<i>Sisyrinchium albidum</i>	Common Blue-eyed Grass	0.06	
<i>Solidago (Euthamia) graminifolia</i>	Viscid Bushy Goldenrod	0.30	
<i>Solidago grammifolia</i>	Grass-Leaved Goldenrod	3.18	
<i>Solidago missouriensis</i>	Missouri Goldenrod	0.41	
<i>Solidago nemoralis</i>	Old Field Goldenrod	0.84	
<i>Solidago speciosa</i>	Showy Goldenrod	0.24	
<i>Sporobolus heterolepis</i>	Prairie Dropseed	0.52	
<i>Stipa spartea</i>	Porcupine Grass	0.05	dry
<i>Talinum rugospermum</i>	Sand Fameflower	0.01	dry
<i>Tephrosia virginiana</i>	Goat's Rue	2.05	
<i>Tradescantia ohiensis</i>	Common Spiderwort	4.22	
<i>Triosteum aurantiacum</i>	Orange-fruited Horse Gentian (Wild Coffee)	0.85	
<i>Verbena stricta</i>	Hoary vervain	1.41	
<i>Verbena urticifolia</i>	White Vervain	0.60	
<i>Veronicaastrum virginicum</i>	Culver's Root	0.70	
<i>Viola sagittata</i>	Arrow-leaved Violet	0.02	
<i>Wulfenia bullii</i> *** (<i>Besseyia</i>)	Kittentails	0.01	
<i>Zizia aptera</i>	Heart-leaved Meadow Parsnip	0.11	
<i>Zizia aurea</i>	Golden Alexander	0.85	
	Total seed weight	113.10	
	Total species count	106	

2013 Follow up notes

The planting was burned in March 2013. The burn was very thorough over the entire planting.

In June 2013, eight Prairie Violet (*Viola pedatifida*) plugs were planted on the south-central edge of the planting.

The following is a list of the seeds that were planted in 2013. The early spring species were planted in June. The remaining seeds were planted in late November and early December. The *Pedicularis* was planted in the area referred to as Fallow Area 2.

Scientific Name	Common Name	Weight
<i>Baptisia leucophaea</i>	Cream Wild Indigo	4.80
<i>Viola pedata</i>	Birdsfoot Violet	0.08
<i>Oxalis violacea</i>	Violet Wood Sorrel	0.07

<i>Pedicularis canadensis</i>	Wood Betony	0.80
<i>Antennaria plantaginifolia</i>	Pussy Toes	0.80
<i>Penstamon hirsutus</i>	Hairy Beard tongue	0.25
<i>Castilleja sessiliflora</i>	Downy Yellow Painted Cup	0.45
<i>Amorpha canescens</i>	Lead Plant	5.40
<i>Hieracium longipilum</i>	Hairy Hawkweed	0.05
<i>Krigia virginica</i>	Dwarf Dandelion	0.01
	Total seed weight	12.71

2014 Follow up notes

The planting was burned on March 29, 2014. The burn was fairly complete over the entire planting.

2015 Follow up notes

The planting was burned in the spring of 2015.

In July 2015, the following seeds were stepped in to the soil:

<i>Antennaria plantaginifolia</i>	Pussy Toes	1.22
<i>Oxalis violacea</i>	Violet Wood Sorrel	0.10
<i>Sisyrinchium albidum</i>	Common Blue-eyed Grass	0.13
<i>Viola pedata</i>	Birdsfoot Violet	0.07

In December, 2015 the following seeds were stepped in to the soil in the SW corner of the planting:

Scientific Name	Common Name	Lbs.
<i>Antennaria neglecta</i>	Field Cat's Foot	0.07
<i>Aster linariifolius</i>	Stiff Aster	2.20
<i>Baptisia leucophaea</i>	Cream Wild Indigo	2.35
<i>Castilleja sessiliflora</i>	Downy Yellow Painted Cup	0.03
<i>Chrysopsis camporum</i>	Golden Prairie Aster	0.13
<i>Cirsium hillii</i>	Hills Thistle	0.03
<i>Comandra umbellata</i>	False Toadflax	0.13
<i>Coreopsis lanceolata</i>	Sand Coreopsis	0.07
<i>Heuchera richardsonii grayana</i>	Alum Root	0.01
<i>Hieracium longipilum</i>	Hairy Hawkweed	0.03
<i>Lobelia spicata</i>	Pale-spiked Lobelia	0.07
<i>Panicum oligosanthos</i>	Scribners	0.33
<i>Panicum villosissimum</i>	White-Haired Panic Grass	1.00
<i>Prenanthes aspera</i>	Rough White Lettuce	0.13
<i>Talinum rugospermum</i>	Sand Fameflower	0.01

2016 Follow up notes

The planting was burned in March 2016. The burn was very thorough over the entire planting.

On April 1, 2016 36 lbs of hand-picked seeds, representing 77 species were distributed over Fallow Area 1 and the degraded area between this planting, the NW corner of Dot's Knob, and 2013 Planting #110. Stewards Al and Mary Meier and Keith Kauffmann spread the seed by hand shortly after the area was burned. Please refer to the 2015 Follow up notes for the 2012 Planting #106 for a complete list of the species included in that mix. In addition, 1.8 lbs of wood betony (*Pedicularis canadensis*) was spread in this same area.