

## Dot & Doug Wade Prairie 2006 Planting #69

**Title and number of planting:** Dot & Doug Wade Prairie 2006 Planting #69

**Author of this history:** Alan Meier

**Revision Date:** 04/05/2016

### **Site conditions:**

**Location:** Ogle County, Township 22N, Range 10E, Section 16. This planting is approximately six acres in size. The western, northern, and eastern boundaries are all straight lines. The southern boundary is irregular. The coordinates of the boundary corners are:

southwest corner: N 41°53'28.0', W 089°21'20.4'

northwest corner: N 41°53'30.2', W 089°21'12.5'

northeast corner: N 41°53'30.1', W 089°21'12.2'

southeast corner: N 41°53'24.4', W 089°21'12.6'

The site is bordered by Doug's Knob on the southeast, the Shabonna Savannah on the south, a remnant prairie north of Potawatomi Ridge on the southwest, a heavily wooded area on the west (off preserve), a cornfield on the north (2007 planting), Dot's Knob on the northeast, and the Dot & Doug Wade Prairie 1994 restoration on the east.

**Soil types:** According to the Ogle County Soil Study, soils include

#727B Waukee loam, 1 to 5 percent slopes – gently sloping, well drained soils on uplands and slightly elevated terraces along streams

**Topographic features:** The planting is quite flat, with no more than a few feet difference in elevation from one end the planting to the other. The planting is at the southern section of a 30 acre field that slopes downward from north to south. In the middle section of the planting is an area running north to south that is somewhat more mesic than the rest of the planting. This wetter area is fed by a drainage that runs all the way from Stone Barn Road to the north.

### **Site History**

This planting probably had been in row crop production from at least 1939 until 1994. The 1939 aerial photo is a little dark over this area, but it appears to already be in row crops. The 1958 aerial clearly shows that the planting was in row crops at that time and continuously until 1994, when Bill Kleiman, Kevin Kaltenbach, and a few other stewards spread combine mix, not hand-collected mix, over the entire field that includes this planting. The mix contained mostly little bluestem. They did not plant enough seed, nor did they cover the planting evenly. They had expected to add more seed, but ran out. This planting did poorly, filling in with cool season grasses, some native prairie plants, and a lot of Rubus, invasive honeysuckle, and box elder seedlings from the fence line to the

## Dot & Doug Wade Prairie 2006 Planting #69

west.

Bill soon wanted to put the site back in corn, but Gene St. Louis, the unit's steward, decided to over-seed it instead. The field languished for a decade. It was mowed once or twice a year to knock down the woody plants. Gene over-seeded a good mix of species, but there was no apparent improvement. After several years of over-seeding, Bill had a farmer spray the area in the fall with a mix of Crossbow and Roundup. Then the farmer plowed it and planted corn in the spring. The corn was in this planting for three years.

### Site Preparations:

After the 2006 corn crop was harvested, the corn stubble was mowed and then burned off on November 20, 2006. Later that week, the field was harrowed. The field was not harrowed again after the seed planting was completed.

### Seed planting:

Planting was performed by Alan Meier, steward of the Dot & Doug Wade Prairie.

Seed planting began on November 27. The seed was mixed in the middle of the planting prior to spreading the seed. The majority of the seed was planted using a pendulum seed broadcaster attached to a small Kubota tractor. Two full passes of the planting were made on November 27 using settings on the broadcaster of 12 and 15. Seed barrels were used to mark the areas where the seed was being sown. That night there was an extremely heavy rainfall, and much of the planting was too wet for the tractor that next day. So on November 28, Illinois Tick Trefoil, Whorled Milkweed, and Thimbleweed were broadcast by hand.

On December 1, a ten inch snowfall blanketed the area. On December 9, the pendulum seed broadcaster attached to the Kubota tractor was again used for broadcasting the remaining seed mix on a rapidly melting snow-cover. Three additional passes of the entire planting were completed that day using settings of 18, 24, and 27 on the spreader. Due to the snow-cover, there was no need to mark the areas that had been seeded that day. The total of five passes over the planting between the two days when the tractor was used ensured a very uniform distribution of the seed.

On December 16 and 17 additional hand-planting of seed was performed, including the inserting of 1200 porcupine grass seeds into the earth. Also, 9 Wild Plum (*Prunus Americana*) plants provided by Chris and Jennifer Hauser were planted.

## Dot & Doug Wade Prairie 2006 Planting #69

### Seed list:

Approximately 314 pounds of seed (including chaff and stems) were planted. A total of 128 species were included. Most of the seed was hand-harvested by Alan and Mary Meier. 77 pounds of the seed were picked in the 2005 season and held over. The remaining 236 pounds were harvested in 2006. The mix included 24 pounds of little bluestem which was machine harvested by the crew. The bulk seed per acre average was 52.33 pounds.

Scientific Name	Common Name	Weight
<i>Agrostis hymenalis</i>	Tickle Grass	0.05
<i>Allium cernuum</i>	Nodding Wild Onion	0.75
<i>Amelanchier leavis</i>	Allegheny Shadblow	0.09
<i>Amorpha canescens</i>	Lead Plant	11.78
<i>Amorpha fruticosa</i>	Indigo Bush	0.35
<i>Anaphalis margaritacea</i>	Pearly Everlasting	0.10
<i>Andropogon (Schizachyrium) scoparium</i>	Little Bluestem	24.20
<i>Anemone canadensis</i>	Meadow Anemone	0.01
<i>Anemone cylindrica</i>	Thimbleweed	1.35
<i>Antennaria neglecta</i>	Field Cat's Foot	0.25
<i>Antennaria plantaginifolia</i>	Pussy Toes	0.25
<i>Aristida purpurascens</i>	Three-awn grass	0.55
<i>Aronia (Pyrus) prunifolia</i>	Black Chokeberry	0.10
<i>Artemisia caudata (campestris)</i>	Beach Wormwood	0.55
<i>Asclepias verticillata</i>	Whorled milkweed	0.25
<i>Aster azureus (oolentangiensis)</i>	Sky-blue Aster	4.60
<i>Aster ericoides</i>	Heath Aster	5.96
<i>Aster laevis</i>	Smooth Aster	0.15
<i>Aster linariifolius</i>	Flax-leaved aster	0.01
<i>Aster linariifolius</i>	Stiff Aster	0.70
<i>Aster novae-angliae</i>	New England Aster	0.41
<i>Aster oblongifolius</i>	Aromatic Aster	2.40
<i>Aster ptarmicoides</i>	White Aster ( Stiff Aster)	0.01
<i>Aster sericeus</i>	Silky Aster	4.55
<i>Astragalus canadensis</i>	Canada Milk Vetch	4.65
<i>Baptisia leucantha</i>	White Wild Indigo	24.39
<i>Baptisia leucophaea</i>	Cream Wild Indigo	6.72
<i>Bouteloua curtipendula</i>	Side Oats Gramma	1.16
<i>Bouteloua hirsuta</i>	Moustache Grass	0.01
<i>Cacalia atriplicifolia</i>	Pale Indian Plantain	3.00
<i>Carex bicknellii</i>	Bicknell's sedge	2.65
<i>Carex muehlenbergii</i>	Muhlenberg's sedge	0.81
<i>Chrysopsis camporum (Heterotheca)</i>	Golden Prairie Aster	0.18
<i>Cirsium hillii</i>	Hill's Thistle	0.02
<i>Comandra umbellata</i>	False Toadflax	0.19
<i>Coreopsis lanceolata</i>	Sand Coreopsis	0.02

## Dot & Doug Wade Prairie 2006 Planting #69

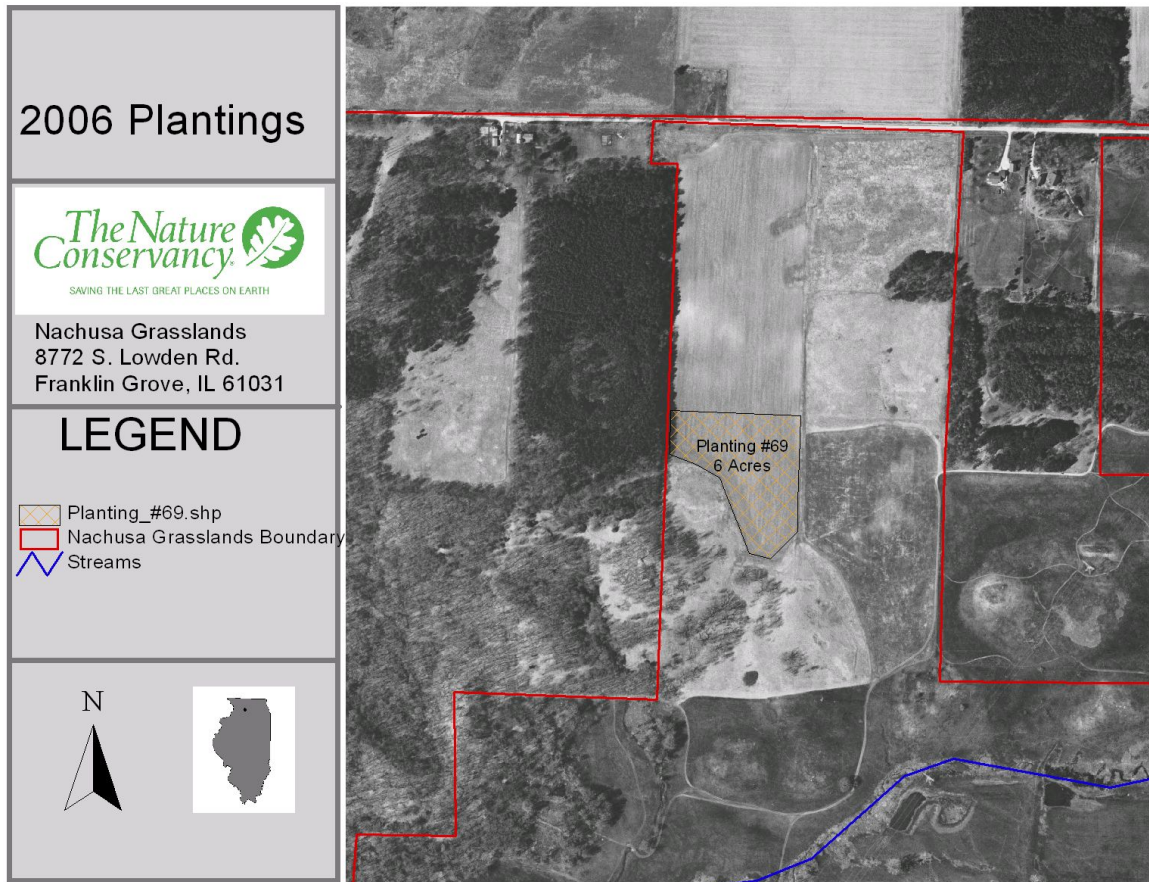
<i>Coreopsis palmata</i>	Prairie Coreopsis	1.20
<i>Coreopsis tripteris</i>	Tall Coreopsis	0.86
<i>Cyperus filiculmis</i>	Slender Sand Sedge	0.08
<i>Desmodium canadense</i>	Showy Tick Trefoil	0.20
<i>Desmodium illinoense</i>	Illinois Tick Trefoil	1.10
<i>Dodecantheon meadia</i>	Shooting Star	2.75
<i>Echinacea pallida</i>	Pale Purple Coneflower	40.95
<i>Elymus canadensis</i>	Canada Wild Rye	5.00
<i>Eragrostis spectabilis</i>	Purple Love Grass	0.15
<i>Eryngium yuccifolium</i>	Rattlesnake Master	8.85
<i>Eupatorium altissimum</i>	Tall Boneset	1.20
<i>Euphorbia corollata</i>	Flowering Spurge	3.95
<i>Gaura biennis pitcheri (longiflora)</i>	Common Gaura	0.05
<i>Gentiana puberulenta</i>	Prairie Gentian	0.24
<i>Geum triflorum</i>	Prairie Smoke	0.05
<i>Helianthemum canadense</i>	Frostweed	0.11
<i>Helianthus occidentalis</i>	Western Sunflower	1.75
<i>Helianthus rigidus (laetiflorus)</i>	Prairie Sunflower	0.30
<i>Heliopsis helianthoides</i>	False Sunflower	1.12
<i>Heuchera richardsonii grayana</i>	Alum Root	0.05
<i>Hieracium longipilum</i>	Hairy Hawkweed	0.40
<i>Houstonia (Hedyotis) longifolia (canadense)</i>	Long-Leaved Bluets	0.02
<i>Hypericum spaerocarpum</i>	Round-fruited St. Johnswort	0.05
<i>Juncus greenei</i>	Greene's Rush	2.28
<i>Koeleria cristata (macrantha)</i>	Prairie June Grass	3.76
<i>Krigia virginica</i>	Dwarf Dandelion	0.05
<i>Kuhnia (Brickellia) eupatorioides</i>	False Boneset	1.73
<i>Lechea stricta</i>	Bushy Pinweed	0.20
<i>Lechea tenuifolia</i>	Slender-Leaved Pinweed	0.40
<i>Lechea villosa (mucronata)</i>	Hairy Pinweed	0.60
<i>Lespedeza capitata</i>	Round-headed Bush Clover	13.15
<i>Liatris aspera</i>	Rough Blazing Star	14.63
<i>Liatris cylindracea</i>	Dwarf Blazingstar	0.13
<i>Liatris pycnostachya</i>	Prairie Blazing Star	0.65
<i>Linum sulcatum</i>	Grooved Yellow Flax	0.10
<i>Lithospermum incisum</i>	Fringed Puccoon	0.05
<i>Lobelia spicata</i>	Pale-spiked Lobelia	0.05
<i>Lysimachia lanceolata</i>	Lance-Leaved Loosestrife	0.05
<i>Monarda fistulosa</i>	Wild Bergamot	0.60
<i>Onosmodium hispidissimum</i>	Marbleseed	0.05
<i>Opuntia humifusa (compressa)</i>	Prickly Pear Cactus	0.95
<i>Oxalis violacea</i>	Violet Wood Sorrel	0.20
<i>Panicum oligosanthes</i>	Scribner's Panic Grass	1.80
<i>Panicum villosissimum</i>	White-haired Panic Grass	0.15
<i>Parthenium integrifolium</i>	Wild Quinine	7.78
<i>Paspalum ciliatifolium muhlenbergii</i>	Hairy Lens Grass	0.01
<i>Penstemon digitalis</i>	Foxglove Beard Tongue	3.85

**Dot & Doug Wade Prairie 2006 Planting #69**

<i>Penstemon hirsutus</i>	Hairy Beard tongue	0.01
<i>Petalostemum (Dalea) candidum</i>	White Prairie Clover	1.00
<i>Petalostemum (Dalea) purpurea</i>	Purple Prairie Clover	15.50
<i>Polygala incarnata</i>	Pink Milkwort	0.01
<i>Polygala polygama obtusata</i>	Purple Milkwort	0.01
<i>Polygala sanguinea</i>	Field Milkwort	0.04
<i>Polygonum tenue</i>	Slender Knotweed	0.01
<i>Potentilla arguta</i>	Prairie Tall Cinquefoil	3.93
<i>Prunus americana (9 plants)</i>	Wild Plum	0.09
<i>Pseudognaphalium obtusifolium</i>	Sweet Everlasting	0.41
<i>Pycnanthemum tenuifolium</i>	Slender Mountain Mint	3.14
<i>Pycnanthemum virginianum</i>	Common Mountain Mint	0.43
<i>Quercus macrocarpa</i>	Bur oak	0.85
<i>Rosa blanda</i>	Early Wild Rose	0.05
<i>Rosa carolina</i>	Pasture Rose	3.00
<i>Rudbeckia hirta</i>	Black-eyed Susan	0.63
<i>Rudbeckia subtomentosa</i>	Sweet Black Eyed Susan	1.63
<i>Ruellia humilis</i>	Wild Petunia	0.10
<i>Scrophularia lanceolata</i>	Early Figwort	0.30
<i>Scutellaria parvula leonardi</i>	Small Skullcap??	0.01
<i>Senecio plattensis</i>	Prairie Ragwort	0.30
<i>Silphium integrifolium</i>	Rosin Weed	4.85
<i>Silphium laciniatum</i>	Compass Plant	8.38
<i>Silphium perfoliatum</i>	Cup Plant	0.61
<i>Silphium terebinthinaceum</i>	Prairie Dock	0.84
<i>Sisyrinchium albidum</i>	Common Blue-eyed Grass	0.10
<i>Solidago grammifolia</i>	Grass-Leaved Goldenrod	4.35
<i>Solidago missouriensis</i>	Missouri Goldenrod	3.46
<i>Solidago nemoralis</i>	Old Field Goldenrod	3.71
<i>Solidago speciosa</i>	Showy Goldenrod	4.18
<i>Sporobolus heterolepis</i>	Prairie Dropseed	0.40
<i>Stipa spartea</i>	Porcupine Grass	0.30
<i>Talinum rugospermum</i>	Sand Fameflower	0.01
<i>Tephrosia virginiana</i>	Goat's Rue	2.51
<i>Teucrium canadense</i>	American Germander	0.20
<i>Tradescantia ohiensis</i>	Common Spiderwort	3.05
<i>Triosteum aurantiacum</i>	Orange-fruited Horse Gentian (Wild Coffee)	1.75
<i>Verbena stricta</i>	Hoary vervain	3.10
<i>Verbena urticifolia</i>	White Vervain	0.95
<i>Veronicastrum virginicum</i>	Culver's Root	1.03
<i>Viola pedata</i>	Birdsfoot Violet	0.04
<i>Viola sagittata</i>	Arrow-leaved Violet	0.09
<i>Wulfenia bullii (Bessey)</i>	Kittentails	1.25
<i>Zizia aptera</i>	Heart-leaved Meadow Parsnip	0.10
<i>Zizia aurea</i>	Golden Alexander	1.43
	Total item weight	304.97

## Dot & Doug Wade Prairie 2006 Planting #69

### Map:



### Lessons learned:

A setting of 12 is too low on the pendulum broadcast spreader. Although a very thorough and even spread of the seed was accomplished by making 5 complete passes, an excessive amount of time was taken to complete the mechanical portion of the planting. A setting of 15 or 18 done in 3 passes is probably better

### 2007 Follow up notes

In June of 2007 a flat of Arrow-leaved violets (*Viola sagittata*) plugs were hand-planted in the planting and were water by hand for a couple of weeks.

### 2008 Follow up notes

The planting had large numbers of prairie plants appearing, but also had problems with undesirable species including, yarrow, Canada goldenrod, sweet clover, Queen Anne's lace, and Canada Thistle. Al and Mary Meier swept the planting several times removing the sweet clover, Queen Anne's lace, and Canada Thistle.

## Dot & Doug Wade Prairie 2006 Planting #69

Box Elder seedlings were also a problem, with large numbers of them being removed, especially near the western boundary of the planting.

The planting was over-seeded in 2008 with 162 lbs. of seed. The seeds were divided into three different mixes, plus some seeds were individually hand planted rather than being put in a mix. Prior to over-seeding, the planting was mowed by John Schmadeke. On November 22, 2008, Al and Mary Meier, and temporary crew member, Ian Kenney, foot-smear planted the dry-mesic mix in the eastern and western sections of the planting. On December 12, 2008, Al used the pendulum broadcast spreader attached to the Kubota tractor to distribute the general and mesic seed mixes over a couple inches of melting snow. The general mix was spread over the entire planting. The mesic mix was applied to the middle corridor of the planting running north to south. On December 28, 2008, Al and Mary Meier carefully raked in the hand plant items. The complete list of seeds is shown below.

Scientific Name	Common Name	Weight (lbs)	Mix
<i>Allium cernuum</i>	Nodding Wild Onion	0.35	G
<i>Amorpha canescens</i>	Lead Plant	10.20	D
<i>Amorpha fruticosa</i>	Indigo Bush	0.20	M
<i>Andropogon gerardii</i> / <i>Sorghastrum nutans</i>	Big Bluestem/Indian Grass mix	4.00	G
<i>Anemone canadensis</i>	Meadow Anemone	0.20	M
<i>Anemone cylindrica</i>	Thimbleweed	1.35	G
<i>Antennaria plantaginifolia</i>	Pussy Toes	1.20	G
<i>Aristida purpurascens</i>	Arrow Feather (three-awn grass)	0.80	G
<i>Asclepias verticillata</i>	Whorled milkweed	0.15	G
<i>Aster linariifolius</i>	Stiff Aster	1.35	D
<i>Baptisia leucantha</i>	White Wild Indigo	9.35	G
<i>Baptisia leucophaea</i>	Cream Wild Indigo	14.35	D
<i>Bouteloua curtipendula</i>	Side Oats Gramma	0.80	G
<i>Cacalia suaveolens</i>	Sweet-scented Indian Plantain	0.05	M
<i>Carex bicknellii</i>	Bicknell's sedge	0.10	G
<i>Comandra umbellata</i>	False Toadflax	0.10	D
<i>Coreopsis palmata</i>	Prairie Coreopsis	4.85	G
<i>Coreopsis tripteris</i>	Tall Coreopsis	0.35	M
<i>Desmodium illinoense</i>	Illinois Tick Trefoil	0.35	G
<i>Echinacea pallida</i>	Pale Purple Coneflower	9.95	G
<i>Eryngium yuccifolium</i>	Rattlesnake Master	2.95	M
<i>Euphorbia corollata</i>	Flowering Spurge	3.05	G
<i>Gentiana (alba) flavida</i>	Cream Gentian	0.12	H
<i>Gentiana puberulenta</i>	Prairie Gentian	0.10	H
<i>Helianthemum canadense</i>	Common Rockrose (Frostweed)	0.65	D
<i>Helianthus occidentalis</i>	Western Sunflower	4.65	G

## Dot & Doug Wade Prairie 2006 Planting #69

<i>Helianthus rigidus (laetiflorus)</i>	Prairie Sunflower	0.10	G
<i>Heliopsis helianthoides</i>	False Sunflower	0.55	G
<i>Hieracium longipilum</i>	Hairy Hawkweed	0.25	D
<i>Juncus greenii</i>	Greene's Rush	0.40	G
<i>Koeleria cristata (macrantha)</i>	Prairie June Grass	1.65	G
<i>Kuhnia (Brickellia ) eupatorioides</i>	False Boneset	2.20	G
<i>Lechea tenuifolia</i>	Slender-Leaved Pinweed	0.95	D
<i>Lespedeza capitata</i>	Round-headed Bush Clover	3.65	G
<i>Liatris aspera</i>	Rough Blazing Star	16.10	G
<i>Liatris pycnostachya</i>	Prairie Blazing Star, Tall Gayfeather	5.20	G
<i>Linum sulcatum</i>	Grooved Yellow Flax	0.10	D
<i>Panicum oligosanthes</i>	Scribner's Panic Grass	0.70	G
<i>Parthenium integrifolium</i>	Wild Quinine	10.25	G
<i>Petalostemum (Dalea) candidum</i>	White Prairie Clover	1.40	D
<i>Petalostemum (Dalea) purpurea</i>	Purple Prairie Clover	5.95	D
<i>Potentilla arguta</i>	Prairie Tall Cinquefoil	2.60	G
<i>Pycnanthemum tenuifolium</i>	Slender Mountain Mint	1.10	G
<i>Pycnanthemum virginianum</i>	Common Mountain Mint	1.35	M
<i>Rosa carolina</i>	Pasture Rose	1.70	G
<i>Rudbeckia subtomentosa</i>	Sweet Black Eyed Susan	1.80	M
<i>Salix humilis</i>	Prairie Willow	0.10	M
<i>Schizachyrium scoparium</i>	Little Bluestem	12.00	G
<i>Silphium integrifolium</i>	Rosin Weed	1.10	G
<i>Silphium laciniatum</i>	Compass Plant	1.05	G
<i>Silphium perfoliatum</i>	Cup Plant	3.95	M
<i>Silphium terebinthinaceum</i>	Prairie Dock	0.45	G
<i>Tephrosia virginiana</i>	Goat's Rue	6.70	D
<i>Triosteum aurantiacum</i>	Orange-fruited Horse Gentian	0.75	G
<i>Veronicastrum virginicum</i>	Culver's Root	3.60	M
<i>Viola pedata</i>	Birdsfoot Violet	0.15	D
<i>Zizia aurea</i>	Golden Alexander	2.90	G
	Total item weight	162.32	

Mixes:

G = General, M = Mesic, D = Dry Mesic, H = Handplant

### 2010 Follow up notes

The planting was burned for the first time on 3/17/2010. The burn was very thorough over the entire planting.

The planting still suffers from large amounts of Canada Goldenrod, especially in the band running north to south through the central portion of the planting and the entire east central part of the planting.



## Dot & Doug Wade Prairie 2006 Planting #69

On November 29, 2010, another burn of this planting was attempted at the same time as the burn of the corn stubble for the Dot & Doug Wade Prairie 2010 Planting #99 to the north. The planting burned very poorly with less than ten percent of the area successfully burning.

### 2011 Follow up notes

On January 2, 2011, Mary and Al Meier spread 5.5 lbs of Little Bluestem (*Andropogon (Schizachyrium) scoparium*) seed in just the areas that had burned in November and along the edges of the planting. Also, a 14.5 lbs seed mix, comprised of asters (*Aster azureus* and *Aster laevis*), round-headed bush clover (*Lespedeza capitata*), slender mountain mint (*Pycnanthemum tenuifolium*), and white indigo (*Baptisia leucantha*) was broadcast along the weedy eastern edge of both the 2006 and 2007 plantings, between the plantings and the two-track.

On April 12, 2011, a burn of the planting was attempted again. This time the entire western side and northeastern corner of the planting were thoroughly burned. The southern half of the planting also burned, but not as thoroughly. The entire middle and east-central part of the planting did not burn at all. A total of approximately fifty percent of the planting burned in either the November, 2010 or April, 2011 burns.

On April 13, 2011, Al Meier spread 16 lbs of Little Bluestem (*Andropogon (Schizachyrium) scoparium*) seed in the areas that had been burned the previous day.

The following seeds harvested in 2011 were planted:

Scientific Name	Common Name	Weight (lbs)	Date Planted	Comments
<i>Antennaria neglecta</i>	Field Cat's Foot	0.02	6/12/2011	planted NE corner
<i>Antennaria plantaginifolia</i>	Pussy Toes	0.38	6/12/2011	planted NE corner
<i>Oxalis violacea</i>	Violet Wood Sorrel	0.05	6/24/2011	planted NE corner
<i>Sporobolus heterolepis</i>	Prairie Dropseed	1.30	12/17/2011	
<i>Veronicastrum virginicum</i>	Culver's Root	1.15	11/27/2011	
<i>Viola sagittata</i>	Arrow-leaved Violet	0.01	6/24/2011	planted NE corner
	Total weight	2.91		

### 2012 Follow up notes

The planting was burned in March 2012. The burn was very thorough over the entire planting.

## Dot & Doug Wade Prairie 2006 Planting #69

The following seeds were spread in this planting in November, 2012:

Scientific Name	Common Name	Weight	Comments
<i>Andropogon gerardii</i>	Big Bluestem	3.85	hand-harvested
<i>Panicum virgatum</i>	Prairie Switch Grass	0.20	
	Total seed weight	4.05	

### 2013 Follow up notes

The planting was burned in March 2013. The burn was very thorough over the entire planting.

### 2014 Follow up notes

The planting was burned on March 29, 2014. The central portion of the planting did not burn thoroughly.

The following seeds were broadcast in this planting in November, 2014:

Scientific Name	Common Name	Weight
<i>Amorpha canescens</i>	Lead Plant	6.35
<i>Andropogon gerardii</i>	Big Bluestem	0.30
<i>Aster ericoides</i>	Heath Aster	2.00
<i>Helianthus occidentalis</i>	Western Sunflower	4.25
<i>Lespedeza capitata</i>	Round-headed Bush Clover	2.85
<i>Lupinus perennis</i>	Wild Lupine	2.25
<i>Potentilla arguta</i>	Prairie Tall Cinquefoil	1.30
<i>Solidago grammifolia</i>	Grass-Leaved Goldenrod	4.50
<i>Sporobolus heterolepis</i>	Prairie Dropseed (cut)	6.00

### 2015 Follow up notes

The planting was burned in the spring of 2015.

The western, southern, and northeastern sections of this planting continue to improve, and the Canada Goldenrod in these areas has diminished significantly. The central and east central portions of the planting are still dominated by Canada Goldenrod. Large numbers of pale purple coneflowers, wild quinine, and other conservative species flowered this year and the seeds of most species were allowed to drop in order to continue to improve the planting. Red clover and sweet clover are the main species that we work to control.

## **Dot & Doug Wade Prairie 2006 Planting #69**

### **2016 Follow up notes**

The planting was burned in March 2016. The burn was very thorough over the entire planting.

On April 1, 2016 33.6 lbs of hand-picked seeds, representing 77 species were distributed over the central part of the planting by stewards Al and Mary Meier and Keith Kauffmann. This is the area that still has some of the greatest concentration of weedy goldenrods. Please refer to the 2015 Follow up notes for the 2012 Planting #106 for a complete list of the species included in that mix.