



Nachusa Grasslands Fire Summary Report

For fires completed from Fall 2009 through Spring 2010

by Bill Kleiman

April 13, 2010

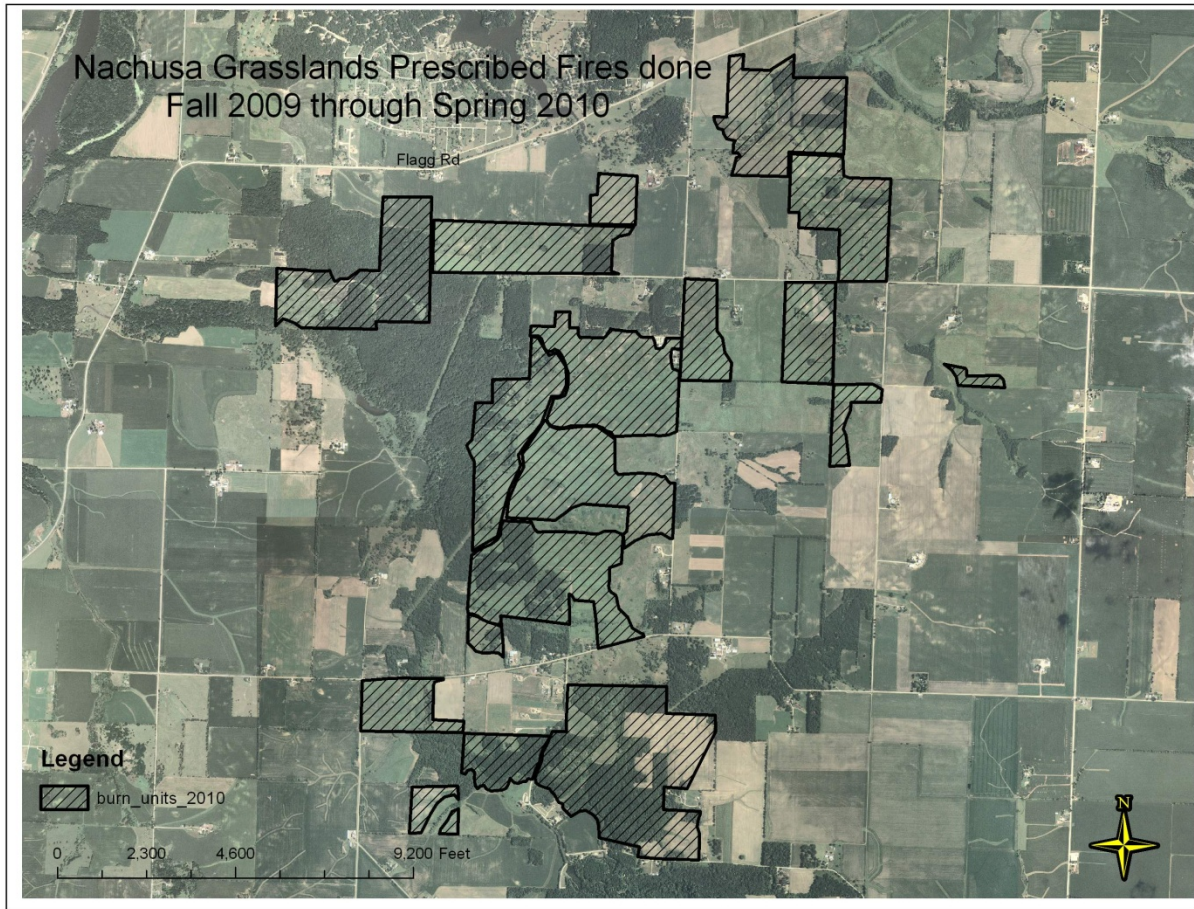
Nachusa had the lead fire director out for a fire program review for the Conservancy in Illinois this spring and that had Bill cleaning up old files, bugging crew to take their pack-test and attend the annual fire training. Our reviewers were the director of fire for TNC, Blane Heumann and Jack McGowan-Stinski of TNC of Michigan. We saved our hardest burn unit for the review, a 150-acre steep rolling oak woodland with lots of wetlands. This yielded a pumper unit stuck in the mud, two tractors stuck, and another pumper with a flat tire. The winds went up to 18 mph and the smoke did not lift like we wanted. There were 15 of us working hard from 9am to 4pm. It was clear to the reviewers that our volunteer crew was skilled, cohesive and resilient. It is important that Nachusa demonstrates that volunteer fire programs are safe, effective, affordable and therefore sustainable over the long haul. As noted author on fire, Steve Pyne, commented on Nachusa, "The people of the new prairie have become people of the new fire."

More photos, map and text below and for a fun slide show on the web go to:

<http://picasaweb.google.com/Bill.Kleiman/Nachusa2010FireSummaryPhotos?authkey=Gv1sRgCNKB5a3-gOGQ0wE&feat=directlink>



We did 24 fires on just over 2,000-acres. The largest burn unit was 400-acres and the smallest 6-acres with an average unit size of 84 acres. We had 43 people participate with 28 of them Nachusa volunteers. We had the help this year from State Wildlife Grant funded Mike Saxton and Brian Dugan. Along with TNC staff Cody and Bill we called this our Core Four and it was great to have that core of crew to build on to fill out our crew rosters.



We are always trying to do better. The following items still stand out as important for our fire program:

The better the fire breaks the easier the fire.

A crew that burns together many times does well.

Redundancy is good. Have access to plentiful equipment that is well maintained.



John Heneghan, Cody Considine, Becky Hartman

Fires done by Nachusa Grasslands crew from Fall 2009 to Spring 2010

Unit Name	Acres	Date	Temp high	Humidity low	Wind high	Crew size	Comment
Baber Woods	40	11/5/2009	51	53	SW7	7	4 hours S of Nachusa
Big Woods	144	11/8/2009	76	48	10 SE	13	
CCK corn stubble	10	11/8/2009	76	48	10 SE	7	
Stonebarn corn stubble	20	11/8/2009	76	48	10 SE	7	
Thelma Carpenter	32	11/12/2009	56	39	11 S	11	
Dot Doug unit	18	3/15/2010	56	52	13 NE	8	
Meiners Wetlands	63	3/16/2010	62	42	7 NE	9	
Holland pasture	38	3/16/2010	62	42	7 NE	9	
Isabel's knob	2	3/17/2010	56	51	6 var	13	Planned to be 400 acres. Winds variable. Extinguished early. Did small fire work elsewhere.
Dot Doug W plantings	11	3/17/2010	62	40	6 W	8	
Main	400	3/18/2010	60	53	20 W	15	
HLP	130	3/19/2010	55	63	8 W	7	
Wahl Prairie	7	3/19/2010	55	63	8 W	8	Assist by Cody, Mike, Brian
CCK	139	3/22/2010	53	40	14 NE	9	
Sand farm	130	3/23/2010	58	38	6 S	13	
W Heinkel woods	200	3/23/2010	58	38	7 S	14	
Clear Cr Pr	80	3/24/2010	54	45	6 E	10	
FCNA W of twist	60	3/26/2010	48	36	7 SE	9	
Naylor Planting	34	3/26/2010	46	36	7 SE	7	
Pine Rock NP	60	3/28/2010	52	35	5 N	9	
Tellabs	150	3/30/2010	65	34	17 S	15	Fire reviewed by Blane & Jack
Stonebarn farm remnant	6	4/9/2010	57	31	6 SW	4	

Red Frank assist	20	4/9/2010	57	31	6 SW	6	Assist
FCNA E of Twist	210	4/12/2010	71	38	13 SE	7	
Total acres	2004						
Average burn unit size	84						



Dave Crites as Crew Boss

**Nachusa Grasslands
Crew who participated in Fall 2009 to Spring 2010 prescribed
fires**

First name	Last Name	# of fires	Comments
Bill	Kleiman	23	202 times Burn Boss as of 4/12/2010
Brian	Dugan	23	
Mike	Saxton	22	
Cody	Considine	21	Crew boss many times
Dave	Crites	13	Crew boss
John	Heneghan	12	Crew boss
Bernie	Buchholz	10	Crew boss
Hank	Hartman	9	Crew boss
Becky	Hartman	9	
Jim	Vieregg	6	
Mary	Vieregg	6	
Keith	Anderson	5	
John	Schmadeke	4	
Chris	Sonnier	4	
Josh	Clark	3	
Dwight	Heckert	3	
Kevin	Kaltenbach	3	
Pete	Oliver	3	
Jay	Stacy	3	
Mike	Adolph	2	
Amber	Andress	2	
Amy	Beltemacchi	2	Neice of Ann H.
Bob	Brown	2	
Curtiss	Butterfield	2	Colleague w Amber A.
Susan	Kleiman	2	
Al	Meier	2	
Tom	Mitchell	2	
Steve	Sentoff	2	
Austin	Webb	2	BFP
Barbara	Unknown	1	trainee
Tim	Benedict	1	
Russ	Brunner	1	BFP
Red	Frank	1	Landowner
Stuart	Goldman	1	TNC
Jan	Grainger	1	
Curt	Brauhn	1	FCNA
Rob	Littiken	1	TNC
John	Nelson	1	INPC Pine Rock
Katie	Schoenfeldt	1	BFP

Elmer	Stauffer	1	ILDNR
Earl	Thomas	1	
Tim	Frank	1	Red's friend
Damian	Considine	1	Wahl
Rusty	Cox	1	Wahl





The end.